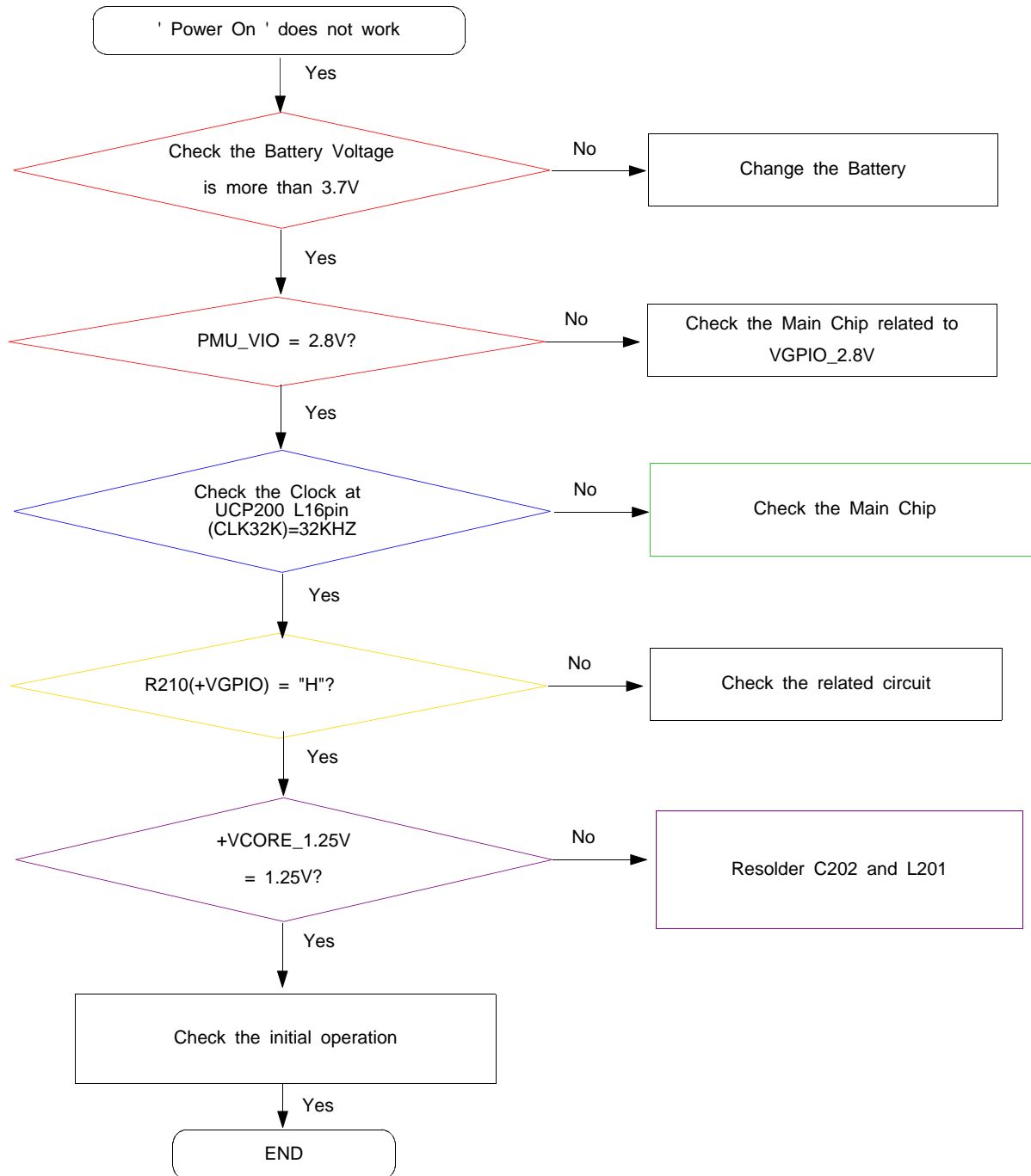
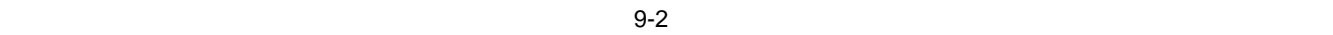
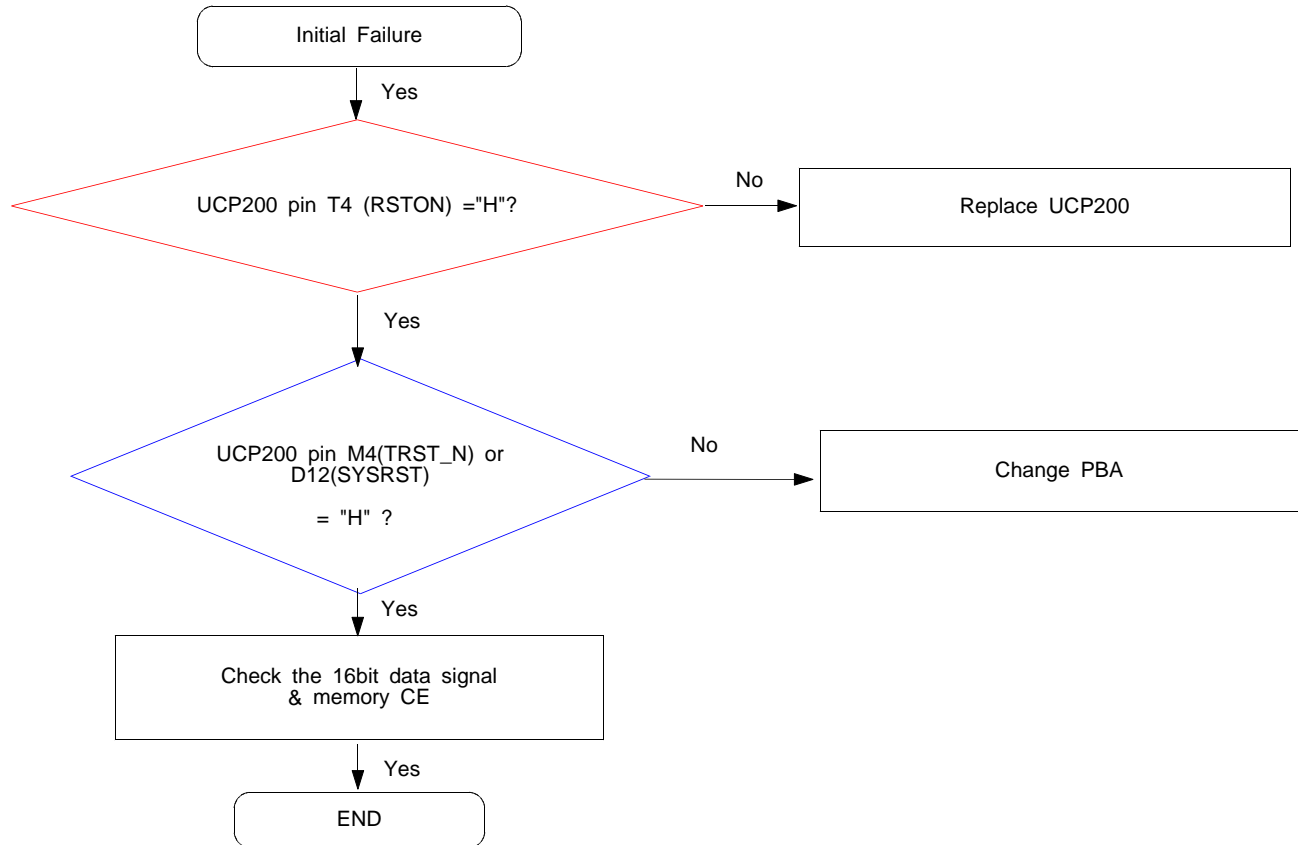


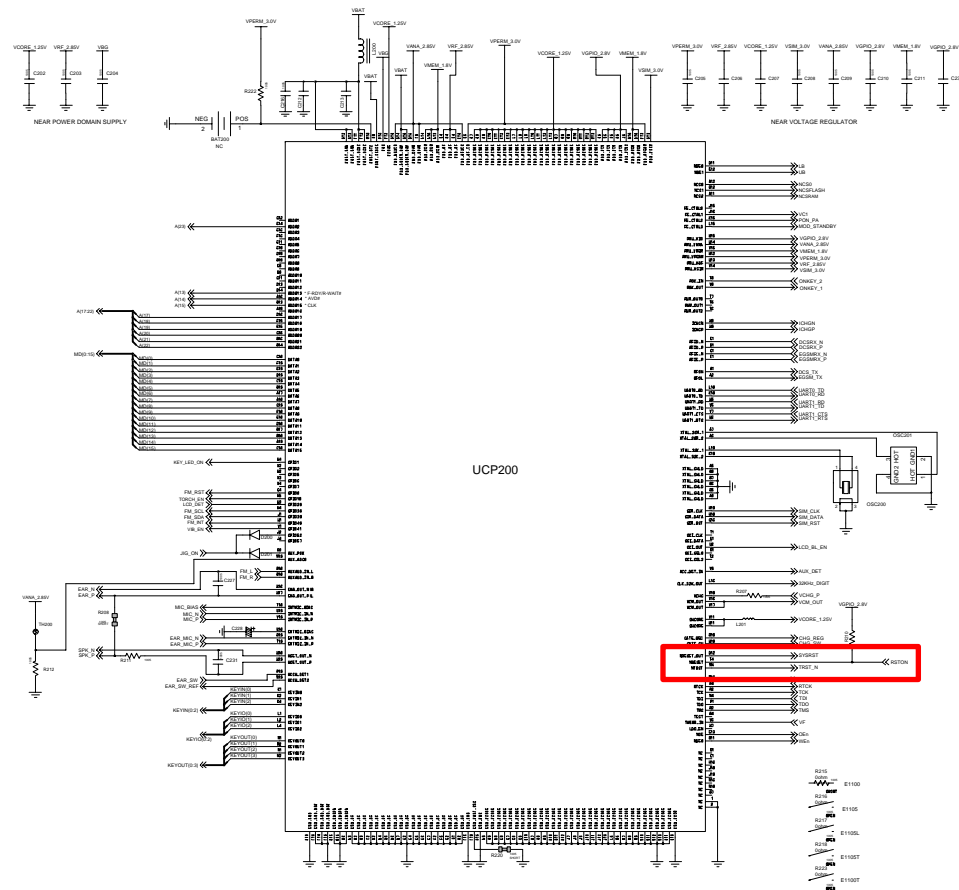
## 9-1. Power On



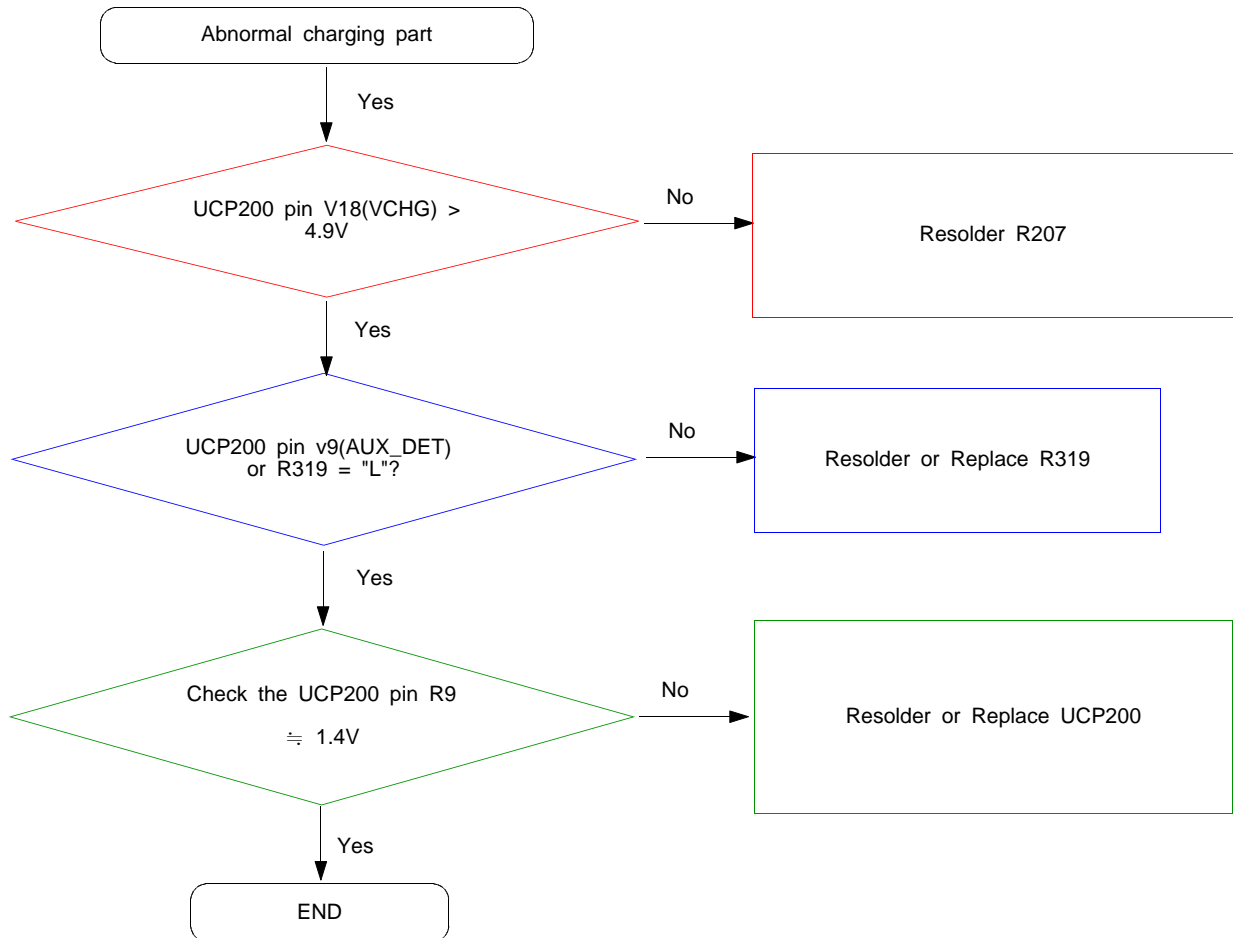


## 9-2. Initial

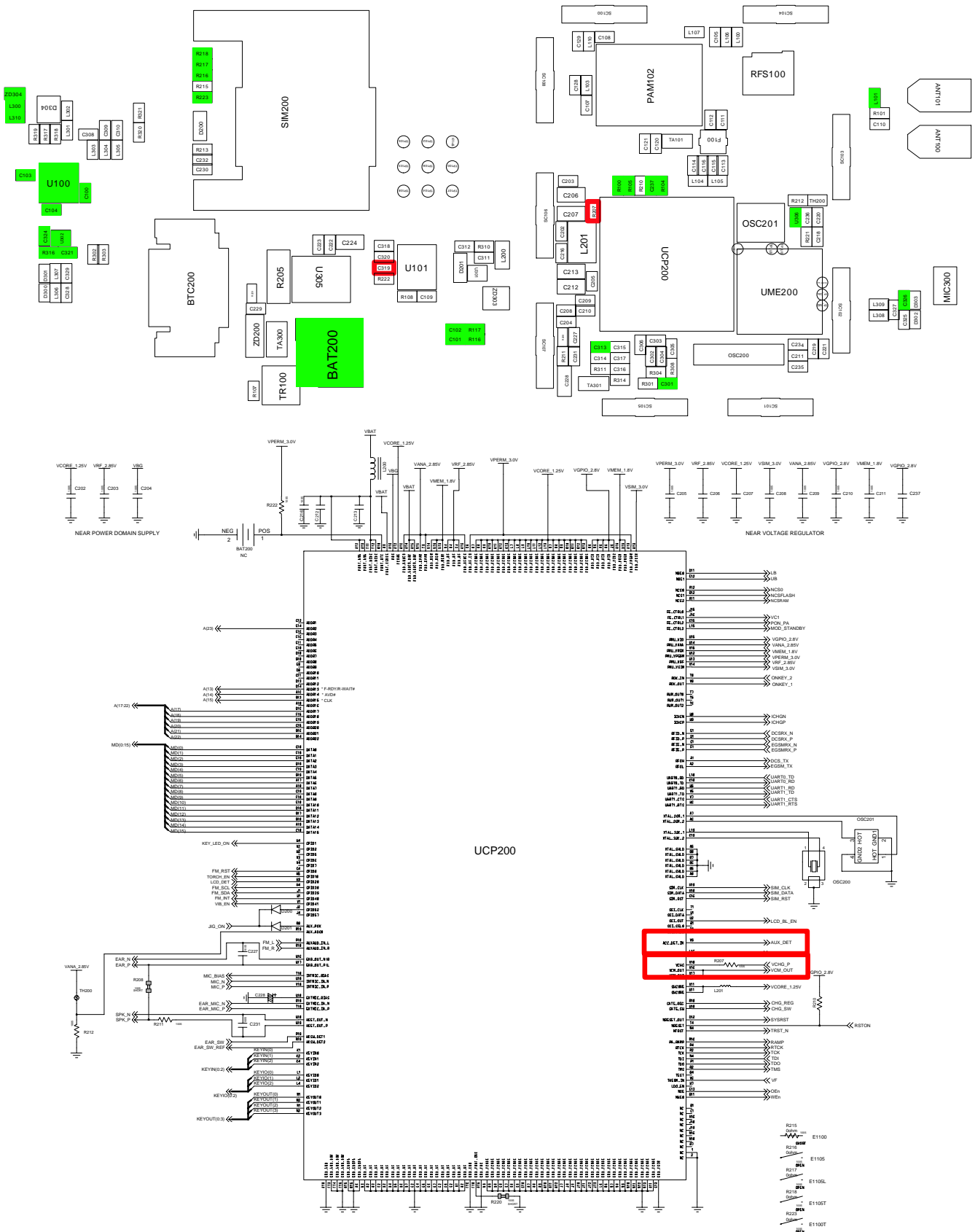




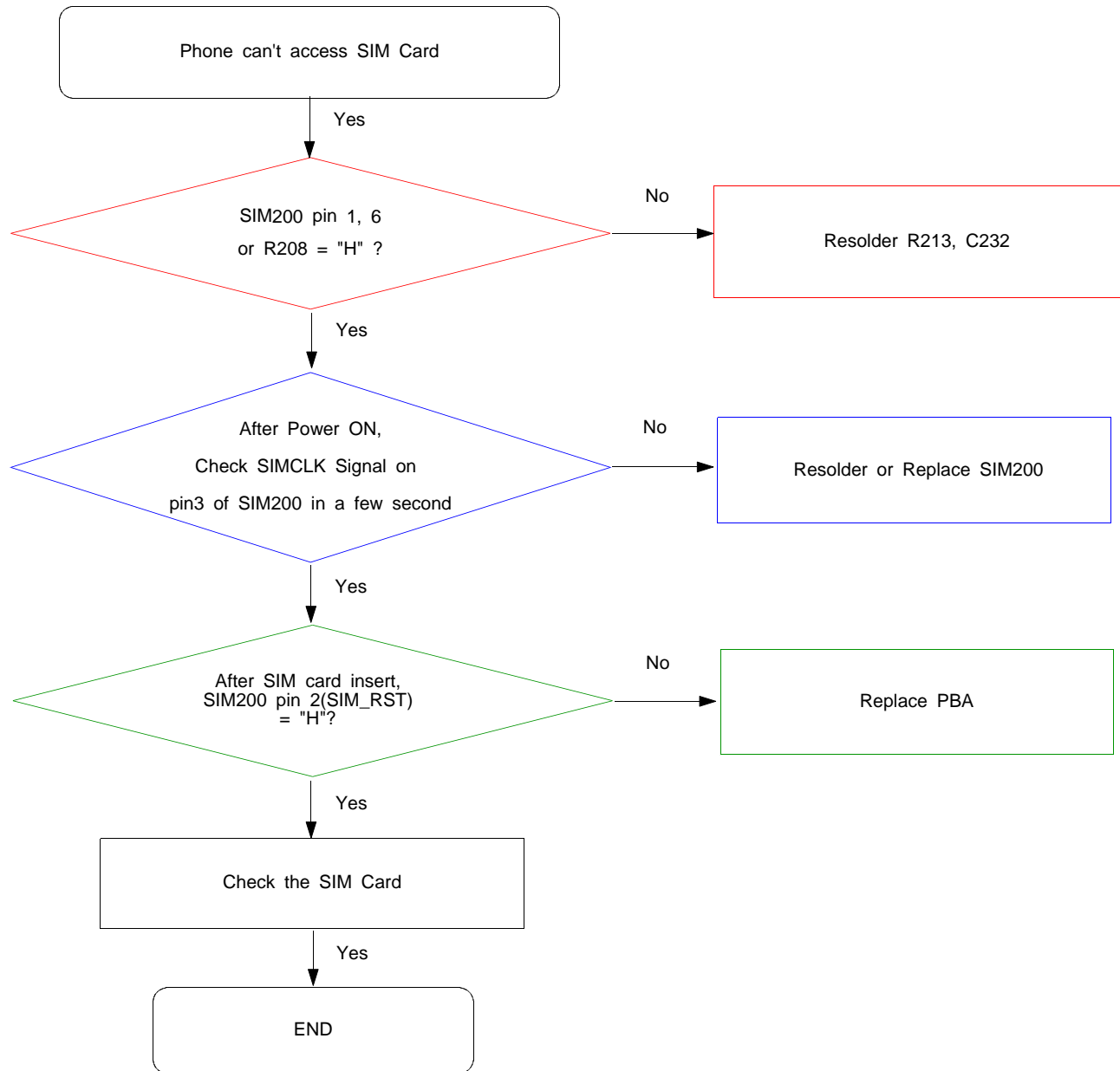
## 9-3. Charging Part

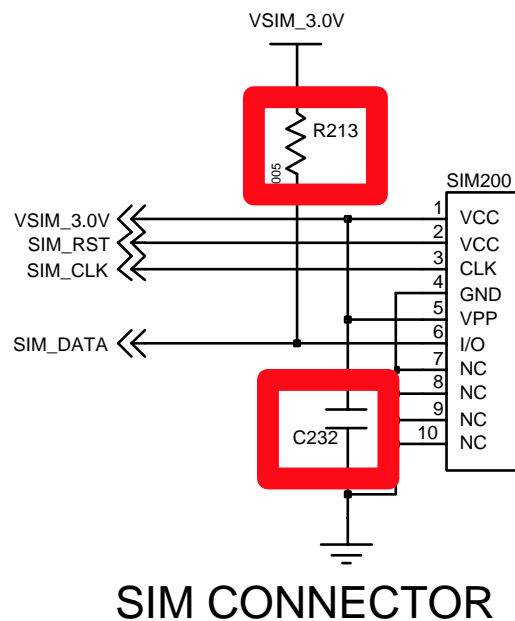
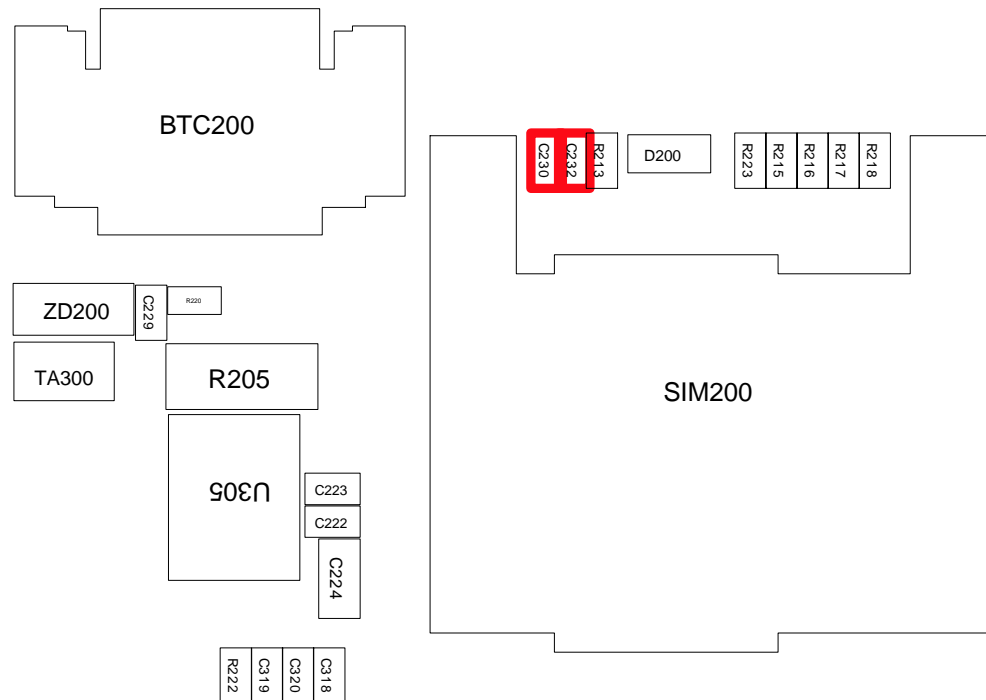


# Flow Chart of Troubleshooting



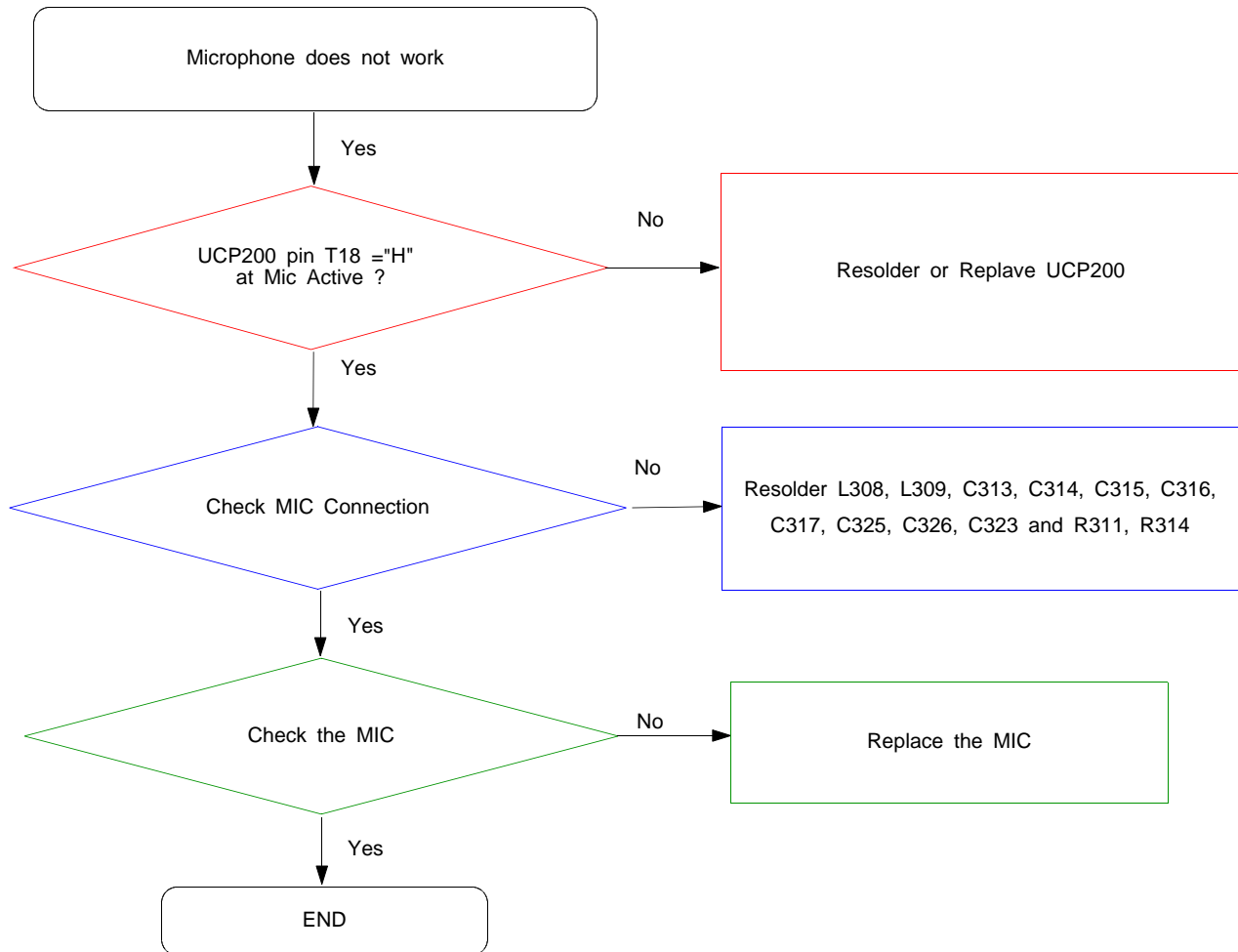
## 9-4. Sim Part

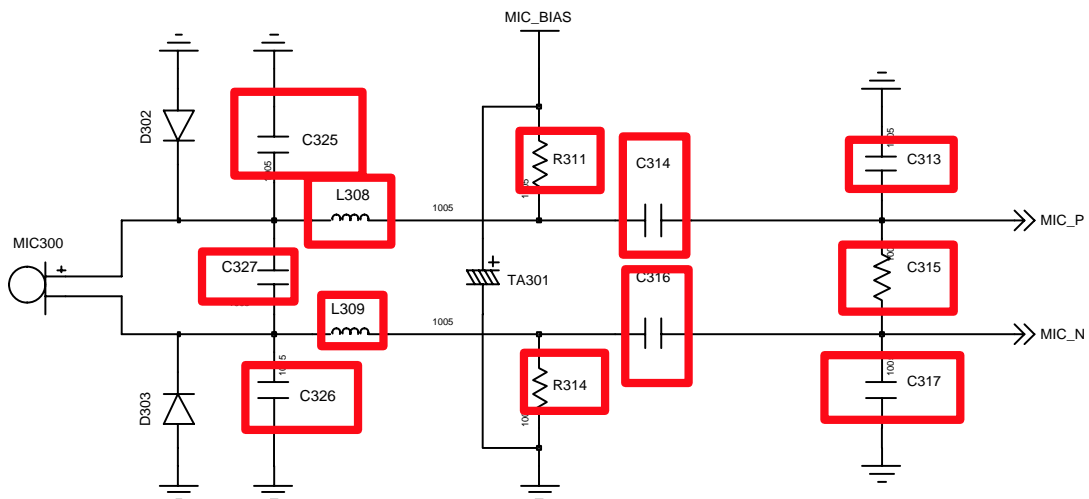






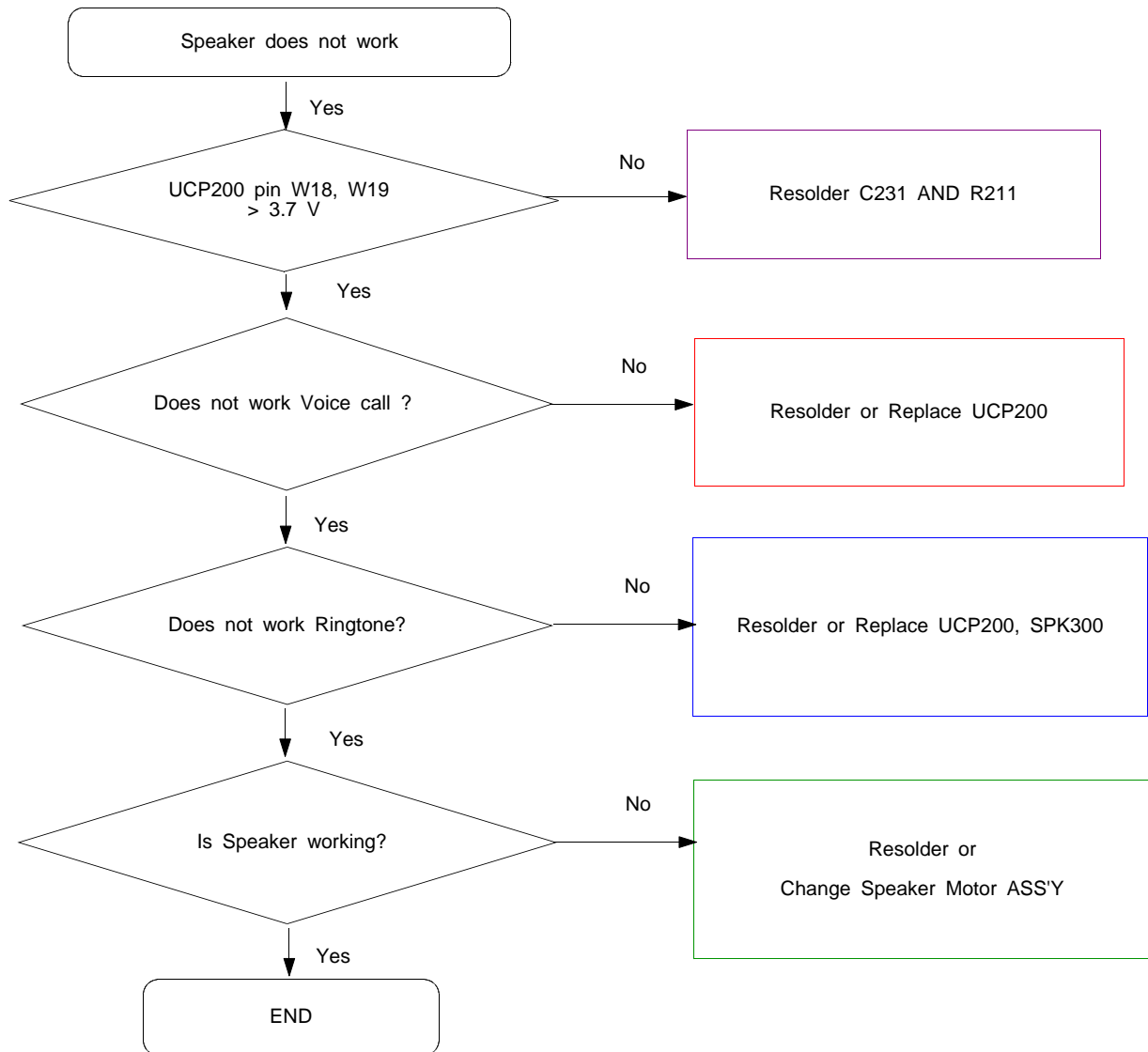
## 9-5. Microphone Part

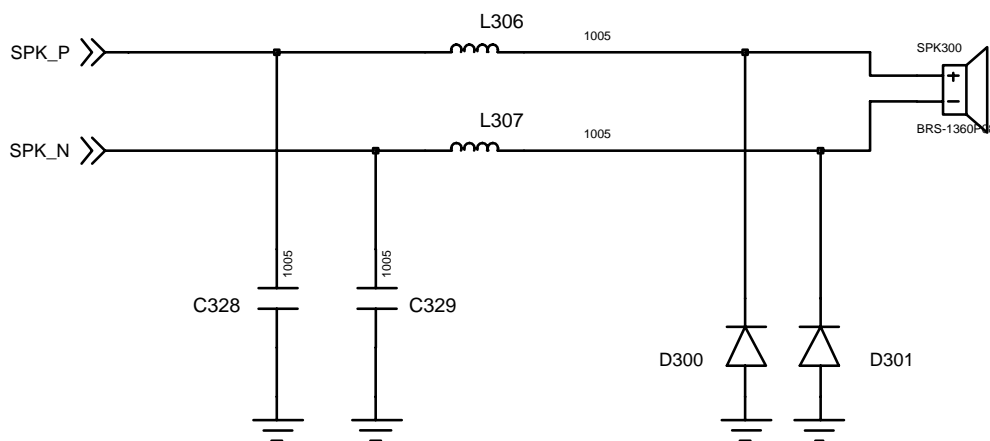
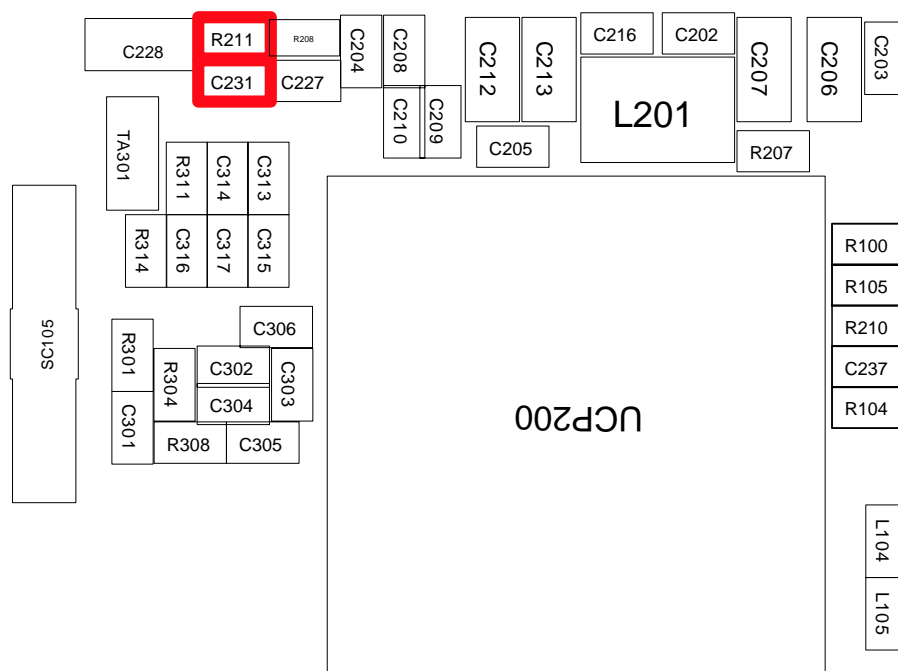




# MAIN\_MIC

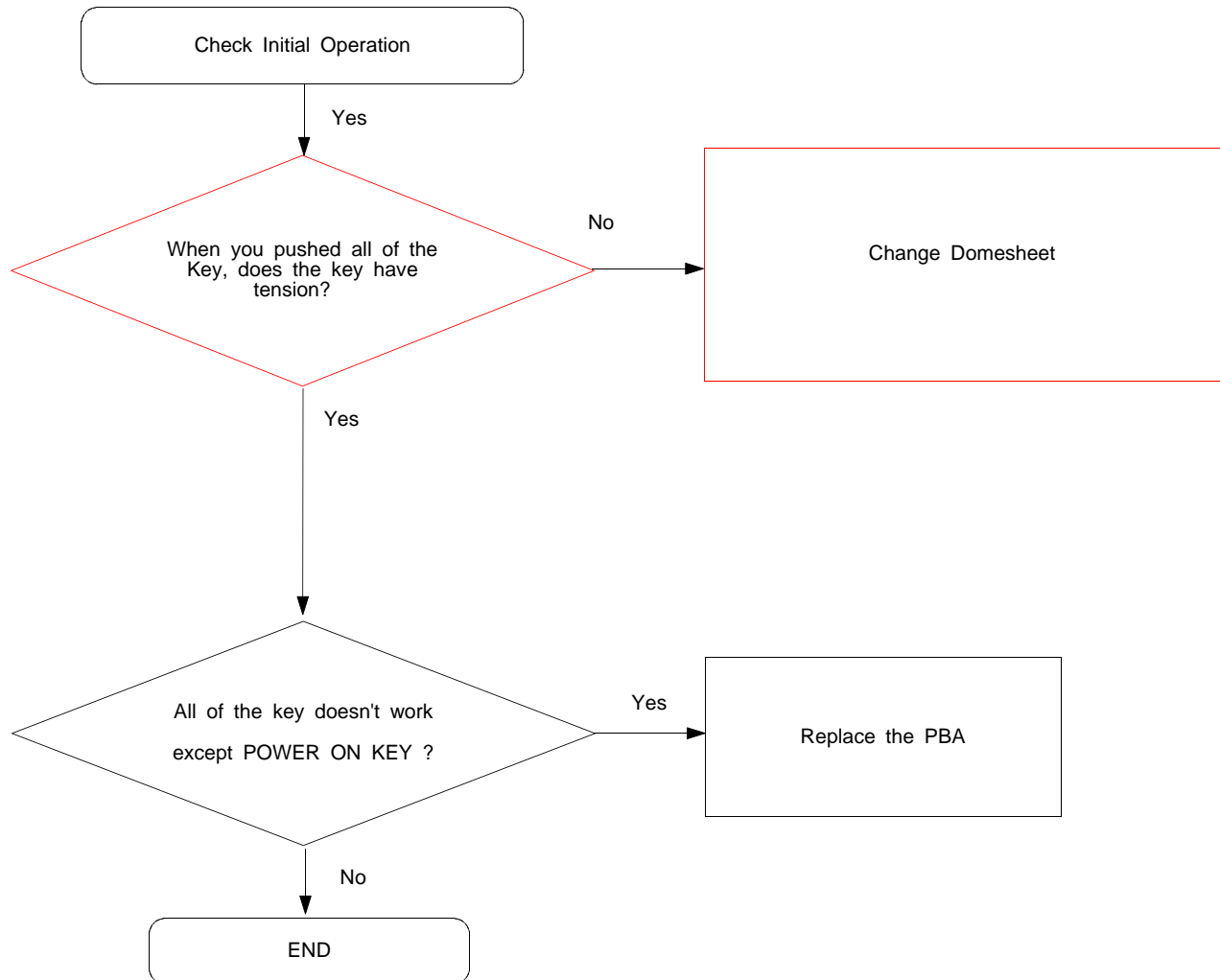
## 9-6. Speaker Part



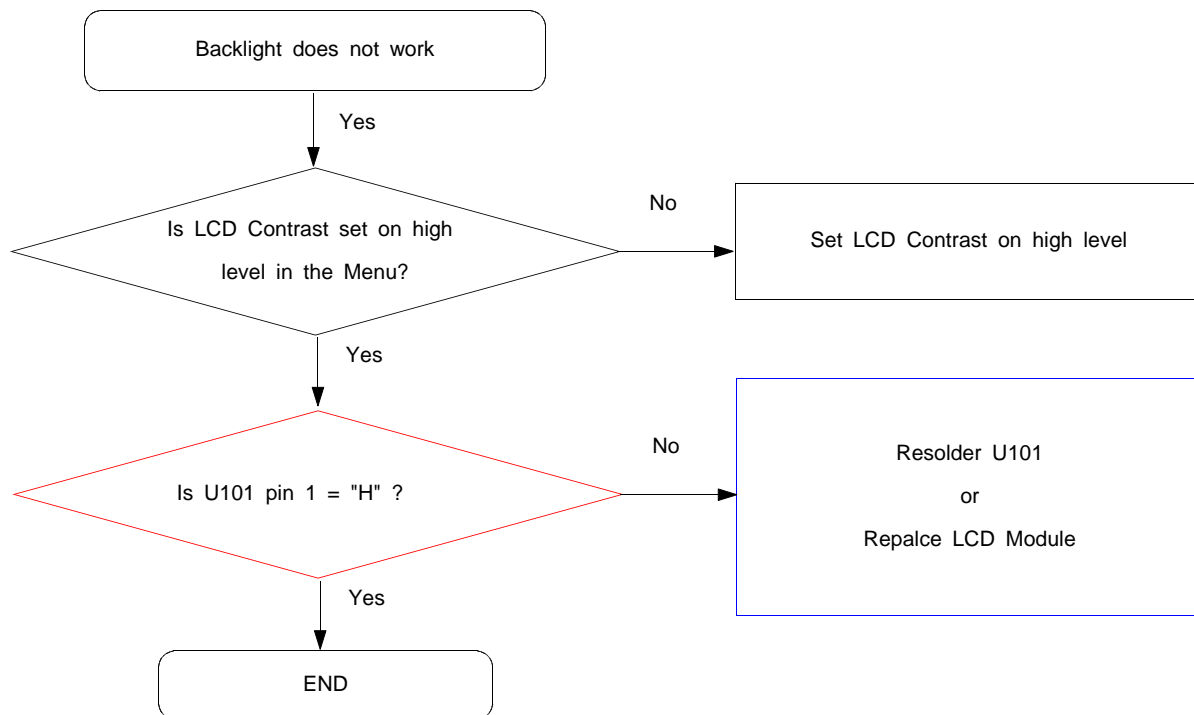


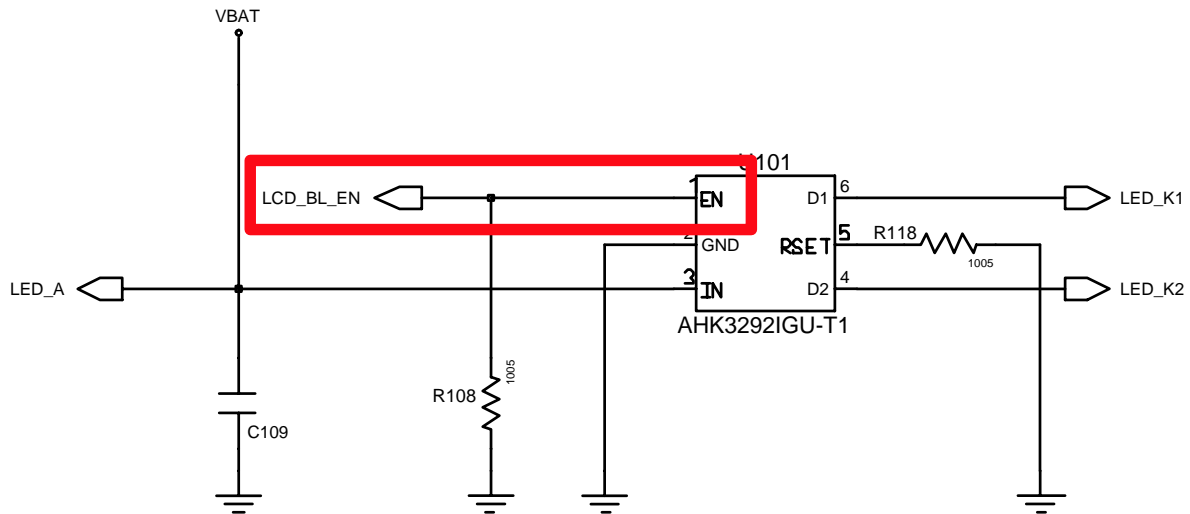
# SPEAKER

## 9-7. Key Data Input



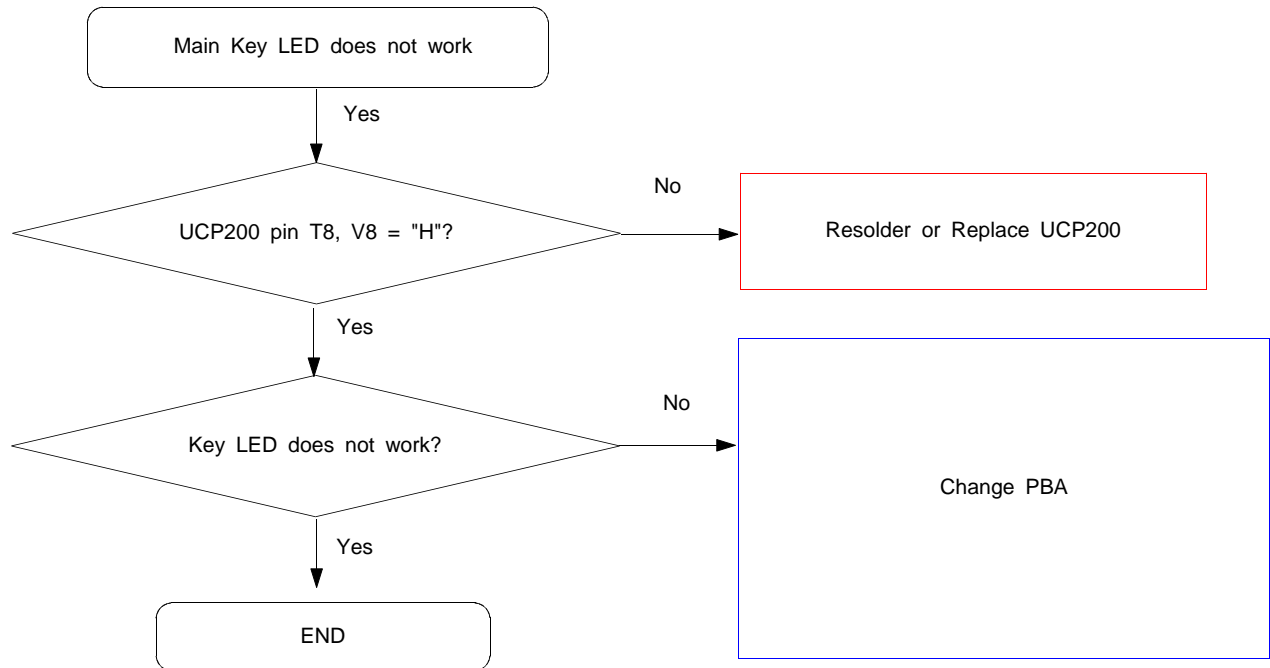
## 9-8. Back Light (for Color Main LCD)



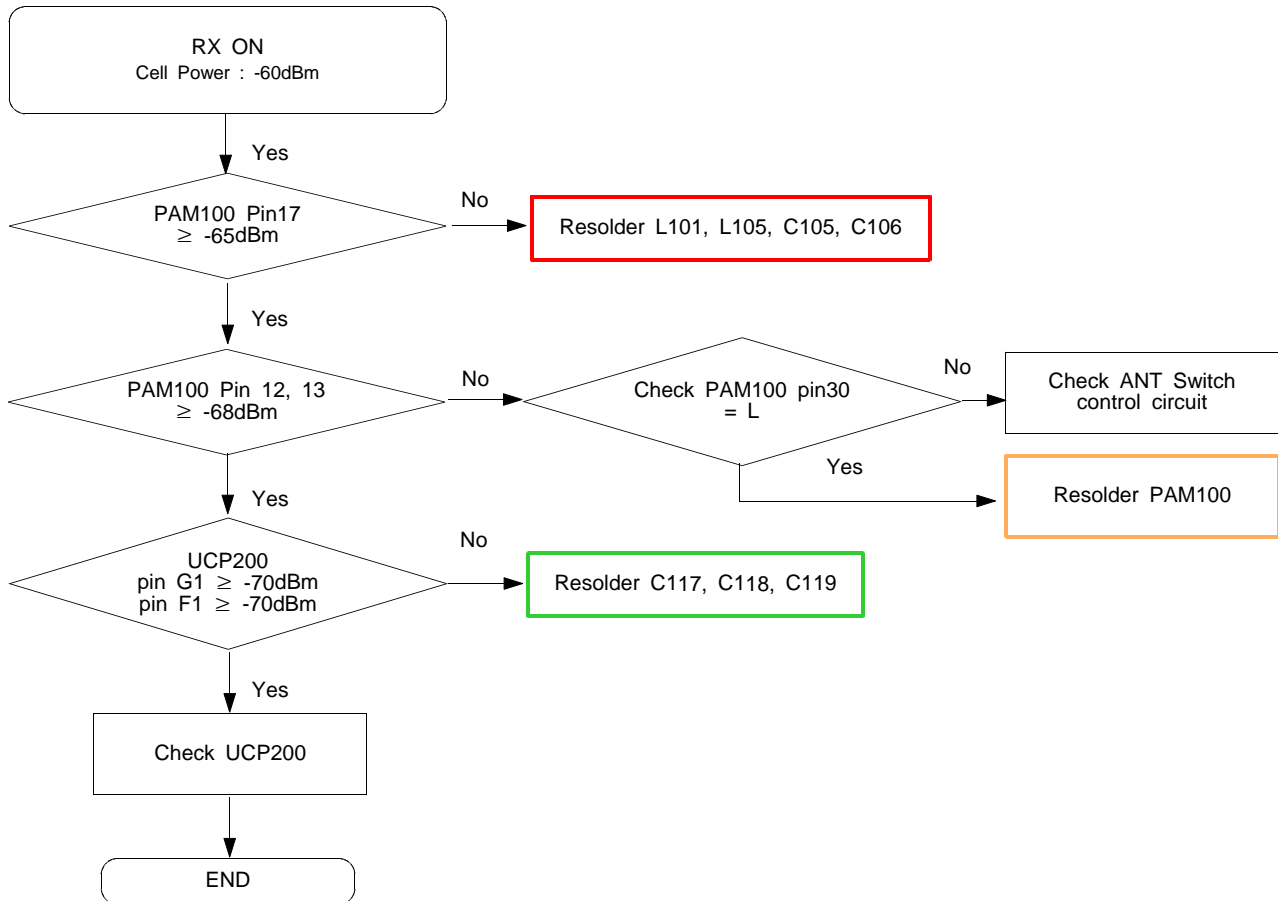


## LCD BACKLIGHT

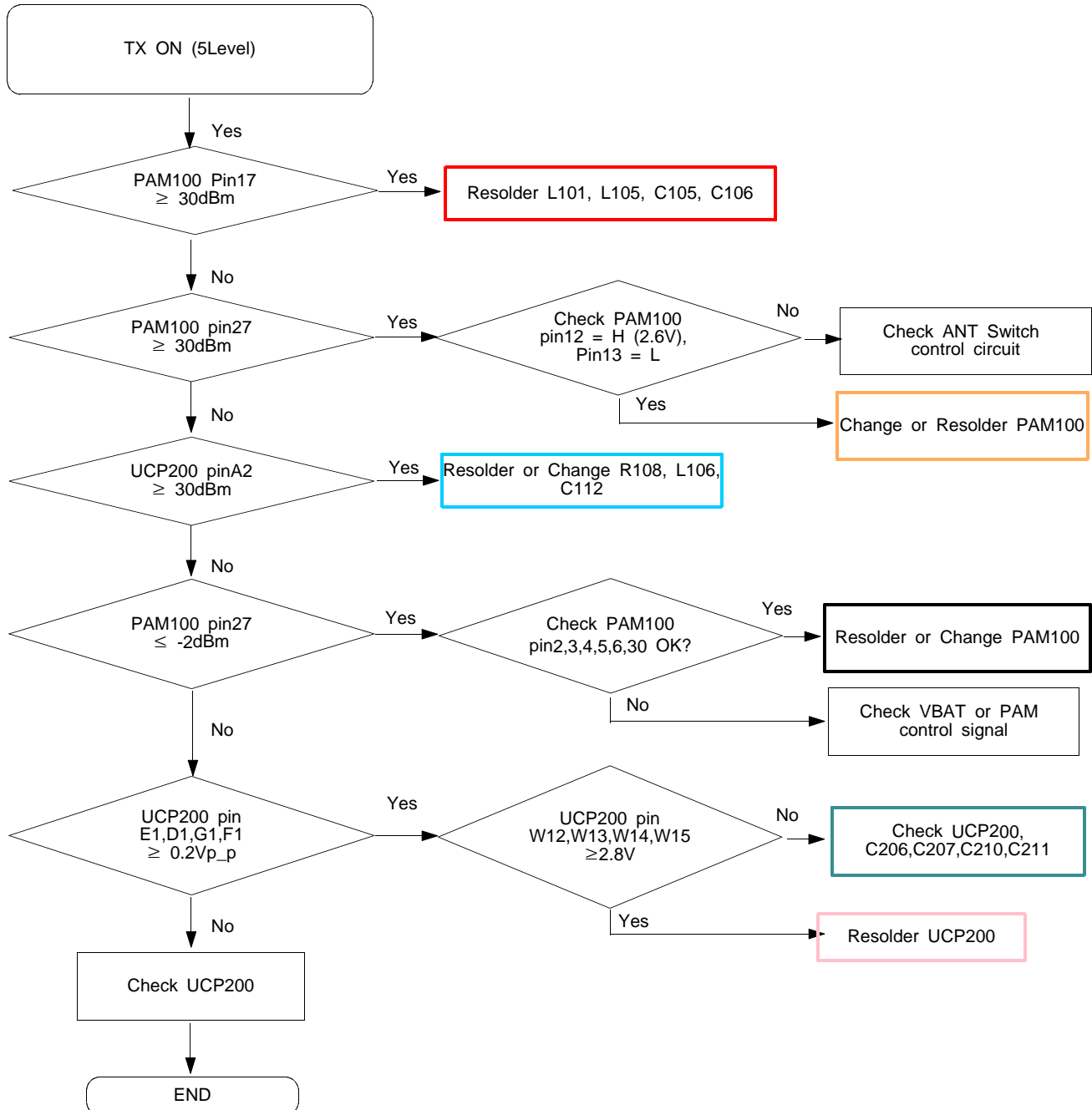
## 9-9. Key Back Light



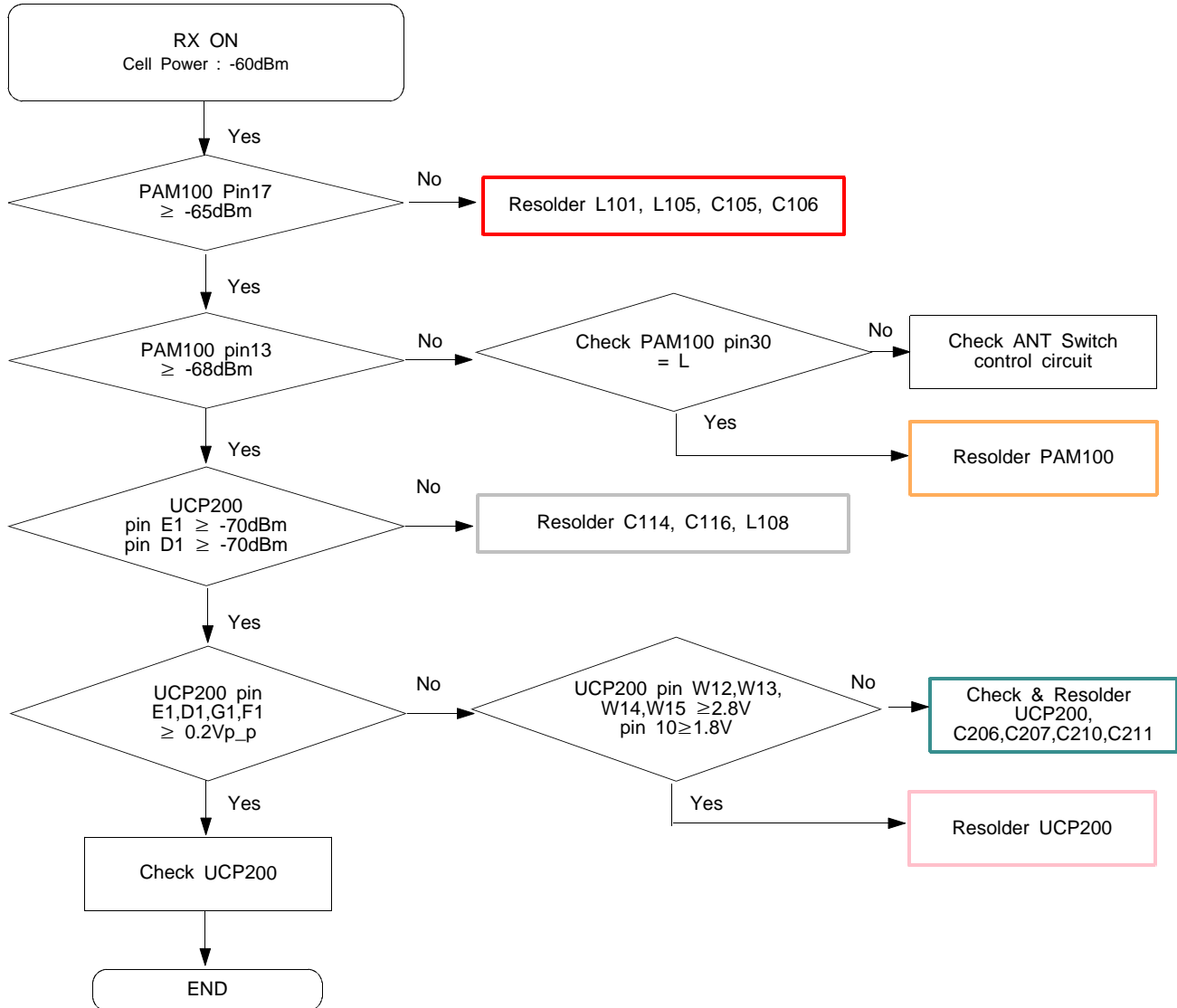


**9-12. GSM Receiver**

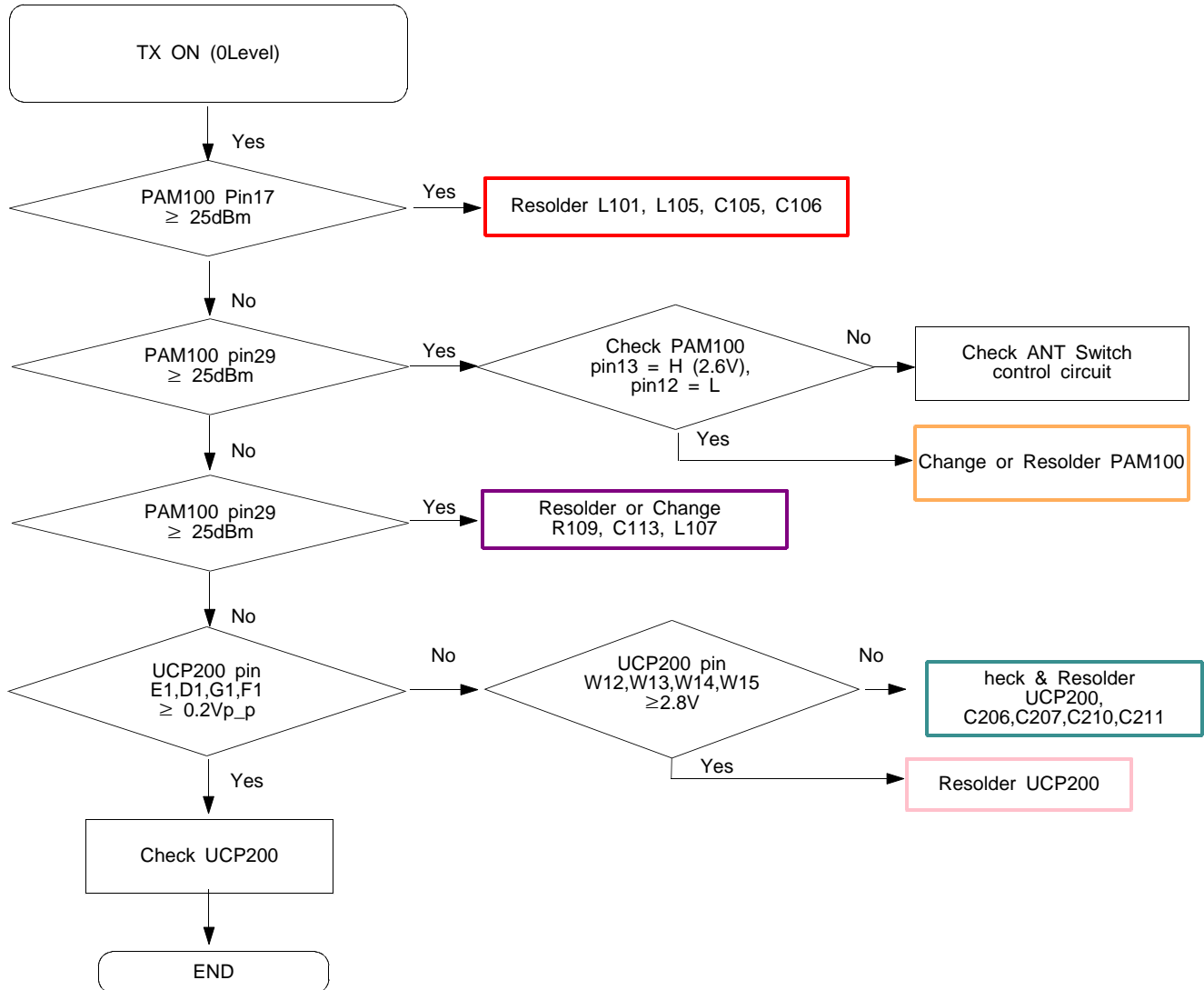
## 9-13. GSM Transmitter

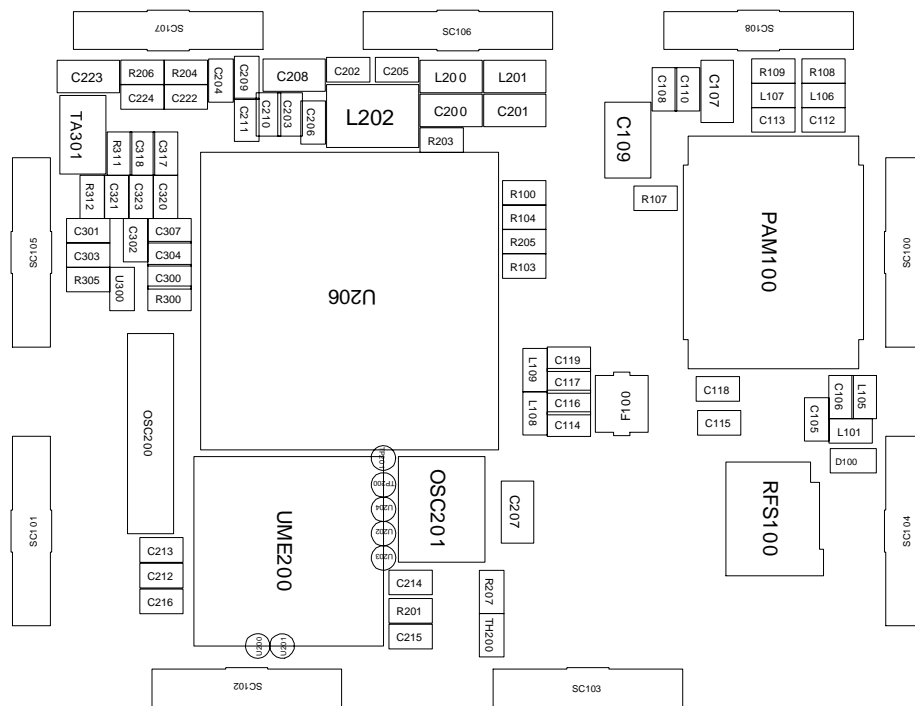


## 9-14. DCS Receiver



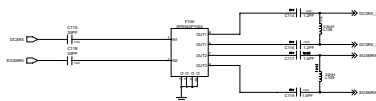
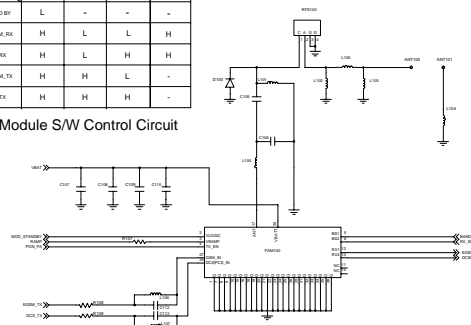
## 9-15. DCS Transmitter





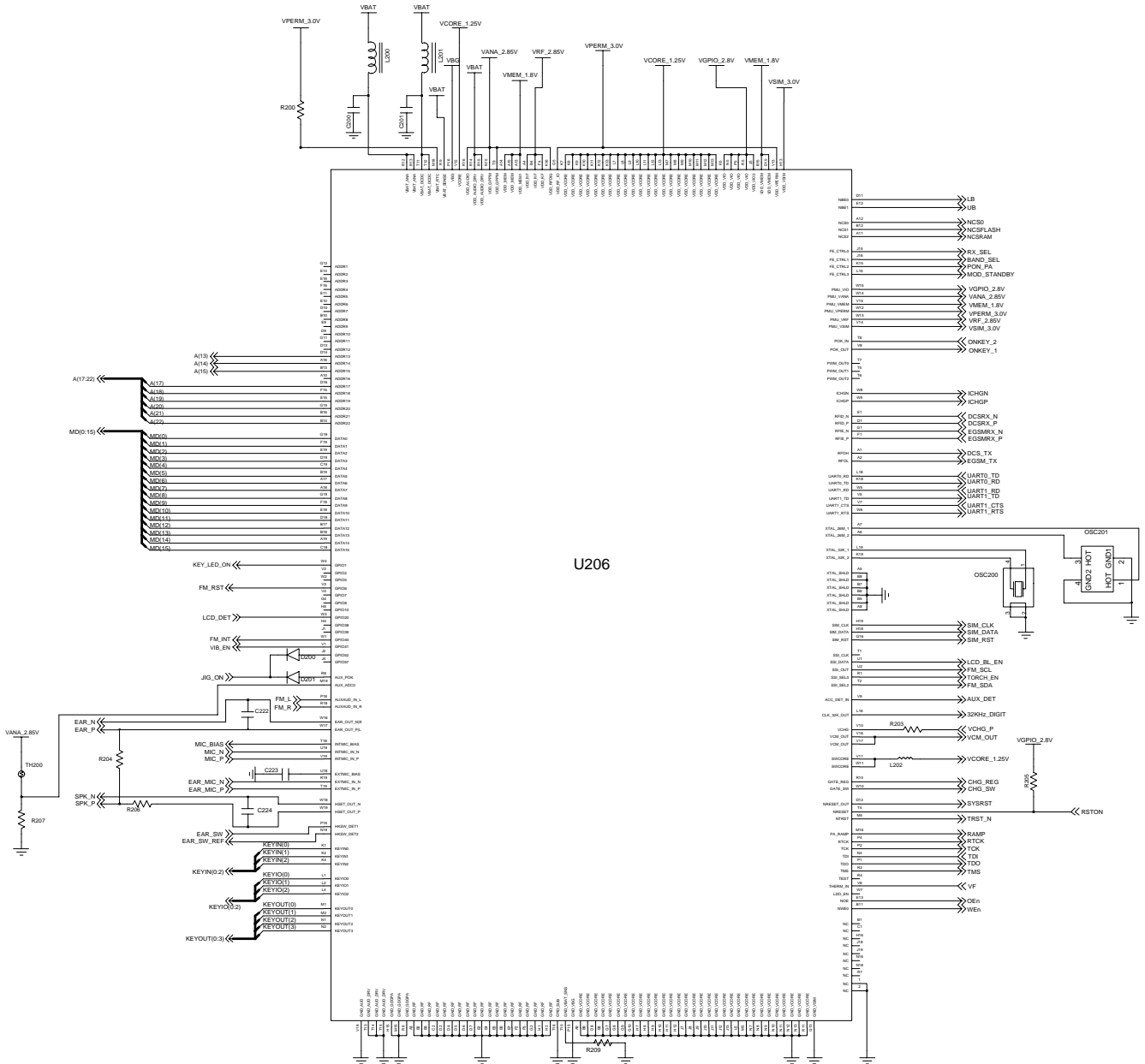
	MOD_STANDBY	PON_FA	BAND_SEL	RX_SEL
STANDBY	L	-	-	-
EGSM_RX	H	L	L	H
DCS_RX	H	L	H	H
EGSM_TX	H	H	L	-
DCS_TX	H	H	H	-

TX Module S/W Control Circuit



## RF Part

# Flow Chart of Troubleshooting

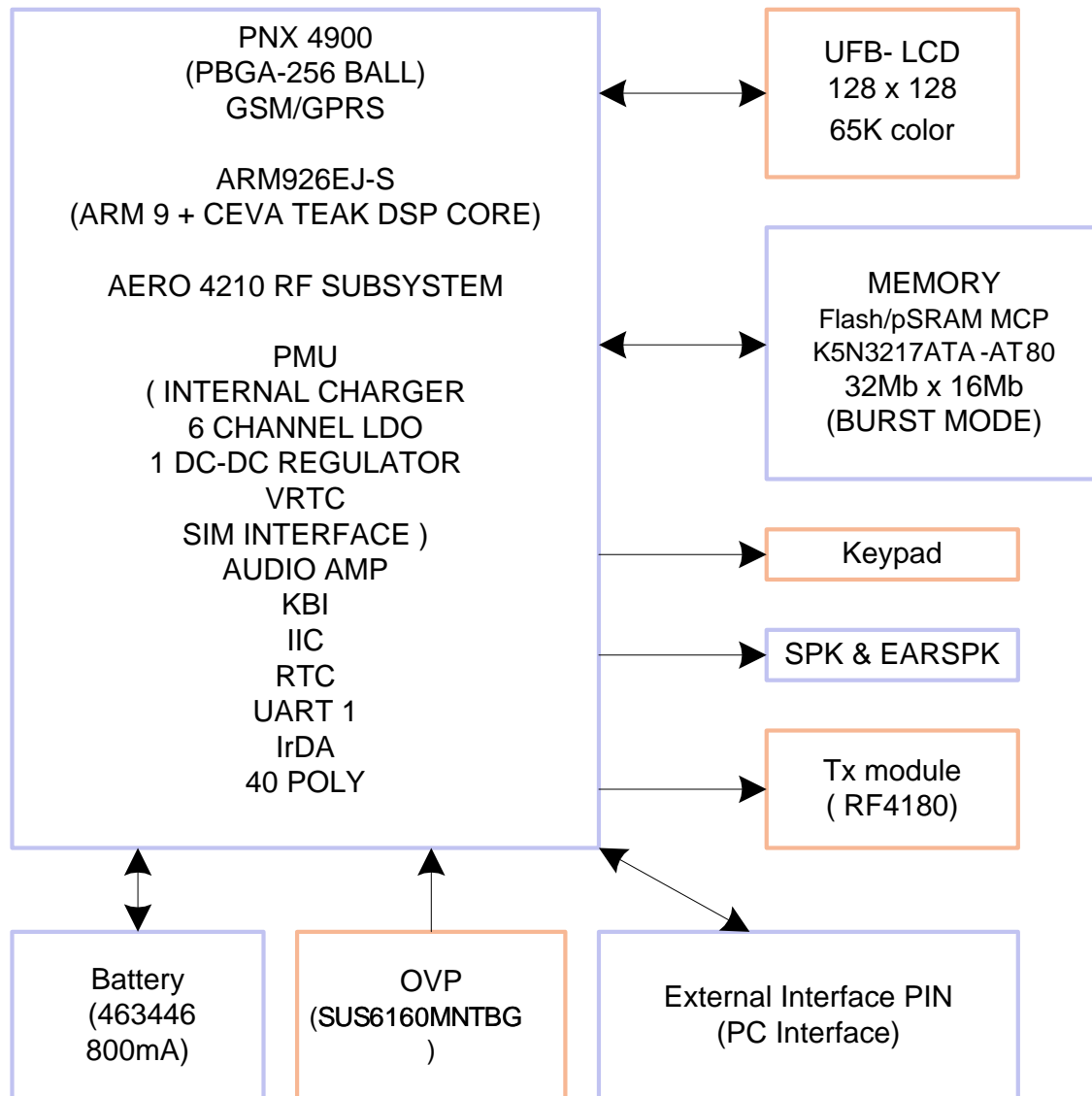


---

## 7. Block Diagrams

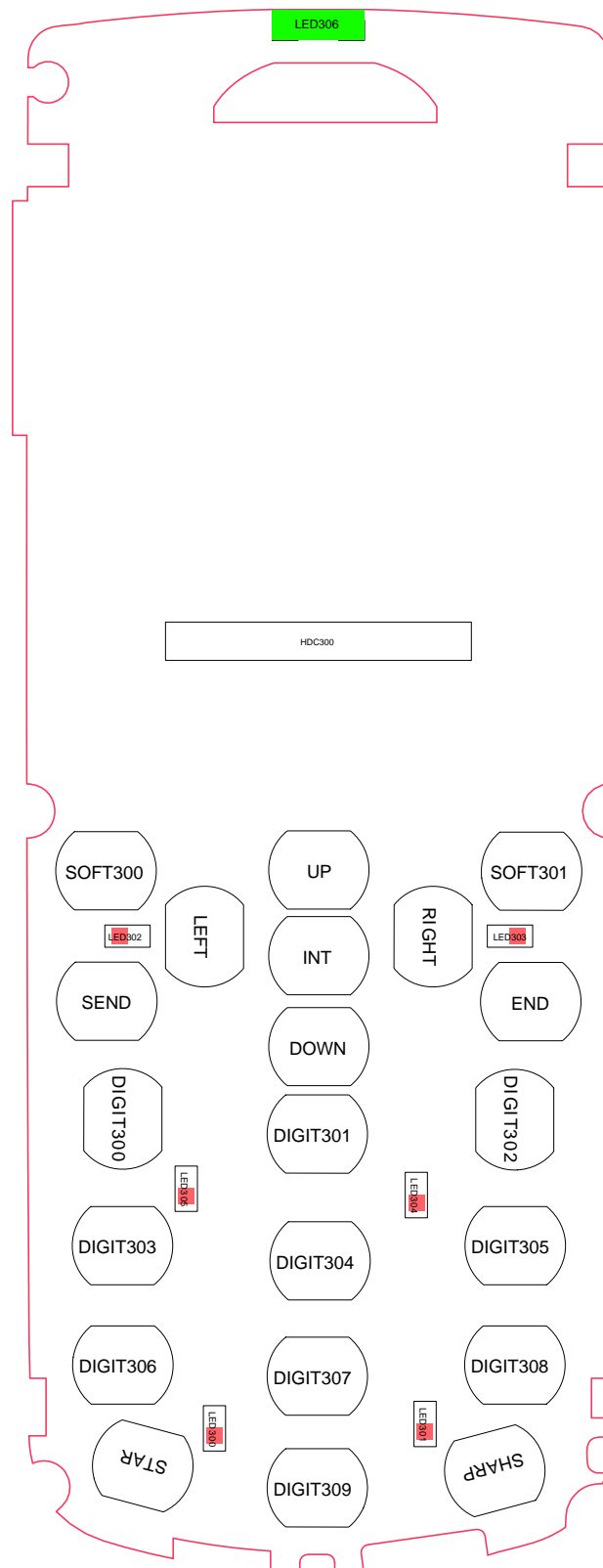
---

### 7-1. RF Solution Block Diagram



## 8. PCB Diagrams

Top





## Bottom

