

---

## 2. Specification

---

### 2-1. GSM General Specification

	GSM900	DCS1800
Freq. Band[MHz] Uplink/Downlink	880~915 925~960	1710~1785 1805~1880
ARFCN range	0~124 & 975~1023	512~885
Tx/Rx spacing	45MHz	95MHz
Mod. Bit rate/ Bit Period	270.833kbps 3.692us	270.833kbps 3.692us
Time Slot Period/Frame Period	576.9us 4.615ms	576.9us 4.615ms
Modulation	0.3GMSK	0.3GMSK
MS Power	33dBm~5dBm	30dBm~0dBm
Power Class	5pcl ~ 19pcl	0pcl ~ 15pcl
Sensitivity	-102dBm	-100dBm
TDMA Mux	8	8
Cell Radius	35Km	2Km

## 2-2. GSM TX power class

<b>TX Power control level</b>	<b>DCS1800</b>
0	30±2 dBm
1	28±3 dBm
2	26±3 dBm
3	24±2 dBm
4	22±3 dBm
5	20±3 dBm
6	18±3 dBm
7	16±3 dBm
8	14±3 dBm
9	12±4 dBm
10	10±4 dBm
11	8±4dBm
12	6±4 dBm
13	4±4 dBm
14	2±5 dBm
15	0±5 dBm

<b>TX Power control level</b>	<b>GSM900</b>
5	33±2 dBm
6	31±3 dBm
7	29±2 dBm
8	27±3 dBm
9	25±3 dBm
10	23±3 dBm
11	21±3 dBm
12	19±3 dBm
13	17±3 dBm
14	15±3 dBm
15	13±3 dBm
16	11±5 dBm
17	9±5 dBm
18	7±5 dBm
19	5±5 dBm

---

## 3. Operation Instruction and Installation

---

### Main Function

- Form factor:Bar
- Main LCD:1.52"/128x128/TFT
- Camera:Non-cam
- T-Flash
- Band:GSM
- Speaker:SPK/RCV 분리형
- Key pad:3x5,Navigation
- Battery: 1000mAh

---

## 9. Reference Abbreviate

---

### Reference Abbreviate

- **AAC**: Advanced Audio Coding.
- **AVC** : Advanced Video Coding.
- **BER** : Bit Error Rate
- **BPSK**: Binary Phase Shift Keying
- **CA** : Conditional Access
- **CDM** : Code Division Multiplexing
- **C/I** : Carrier to Interference
- **DMB** : Digital Multimedia Broadcasting
- **EN** : European Standard
- **ES** : Elementary Stream
- **ETSI**: European Telecommunications Standards Institute
- **MPEG**: Moving Picture Experts Group
- **PN** : Pseudo-random Noise
- **PS** : Pilot Symbol
- **QPSK**: Quadrature Phase Shift Keying
- **RS** : Reed-Solomon
- **SI** : Service Information
- **TDM** : Time Division Multiplexing
- **TS** : Transport Stream

---

# 1. Safety Precautions

---

## 1-1. Repair Precaution

Before attempting any repair or detailed tuning, shield the device from RF noise or static electricity discharges.

Use only demagnetized tools that are specifically designed for small electronic repairs, as most electronic parts are sensitive to electromagnetic forces.

Use only high quality screwdrivers when servicing products. Low quality screwdrivers can easily damage the heads of screws.

Use only conductor wire of the properly gauge and insulation for low resistance, because of the low margin of error of most testing equipment.

We recommend 22-gauge twisted copper wire.

Hand-soldering is not recommended, because printed circuit boards (PCBs) can be easily damaged, even with relatively low heat. Never use a soldering iron with a power rating of more than 100 watts and use only lead-free solder with a melting point below 250°C (482°F).

Prior to disassembling the battery charger for repair, ensure that the AC power is disconnected. Always use the replacement parts that are registered in the SEC system. Third-party replacement parts may not function properly.

## **1-2. ESD(Electrostatically Sensitive Devices) Precaution**

Many semiconductors and ESDs in electronic devices are particularly sensitive to static discharge and can be easily damaged by it. We recommend protecting these components with conductive anti-static bags when you store or transport them.

Always use an anti-static strap or wristband and remove electrostatic buildup or dissipate static electricity from your body before repairing ESDs.

Ensure that soldering irons have AC adapter with ground wires and that the ground wires are properly connected.

Use only desoldering tools with plastic tips to prevent static discharge.

Properly shield the work environment from accidental electrostatic discharge before opening packages containing ESDs.

The potential for static electricity discharge may be increased in low humidity environments, such as air-conditioned rooms. Increase the airflow to the working area to decrease the chance of accidental static electricity discharges.

## 6. Level 1 Repair

### 6-1. Software Downloading

#### 6-1-1. Pre-requisite for Downloading

- Downloader Program([SC6530](#))
- GT-E1202 Mobile Phone
- Data Cable
- JIG BOX
- Binary files

#### 6-1-2. S/W Downloader Program

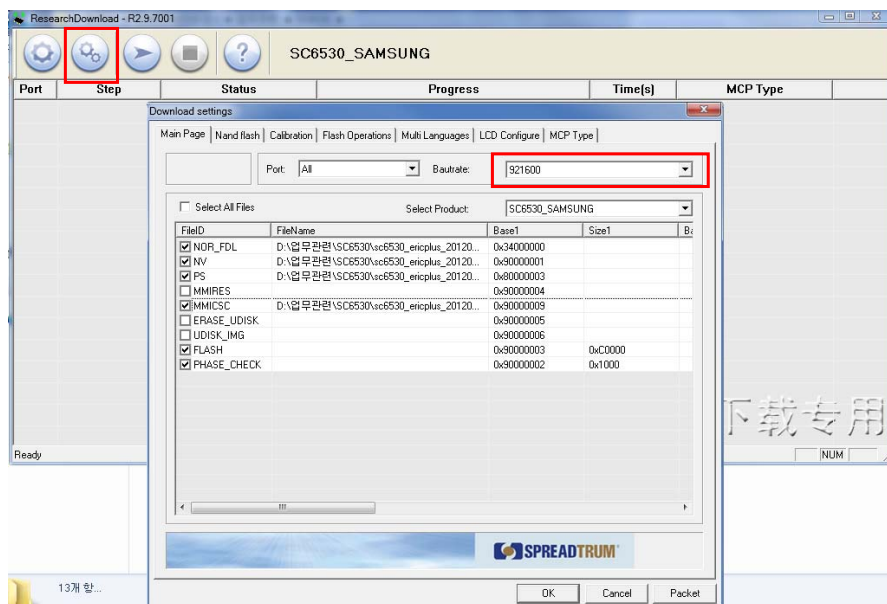
1. Choose one(Baudrate: 921600)

NOR\_FDL : nor\_fdl.bin

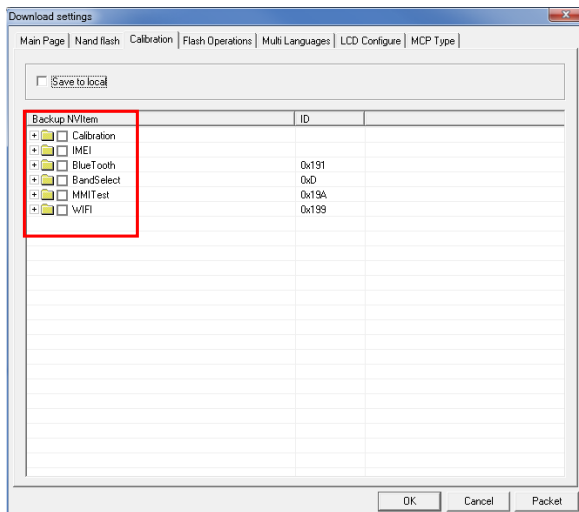
NV : nvitem.bin

PS: SC6530\_sc6530\_samsung\_EricPlus\_stone.bin

MMICSC: mmi\_res\_128x160\_csc.bin



2. In Calibration part, click "uncheck" and push OK button.



3. first press start button and press ok key among navi-key after inserting battery and usb cable connection



4. Confirm the downloaded version name and etc. :

\*#1234#

Full Reset :

\*2767\*3855#