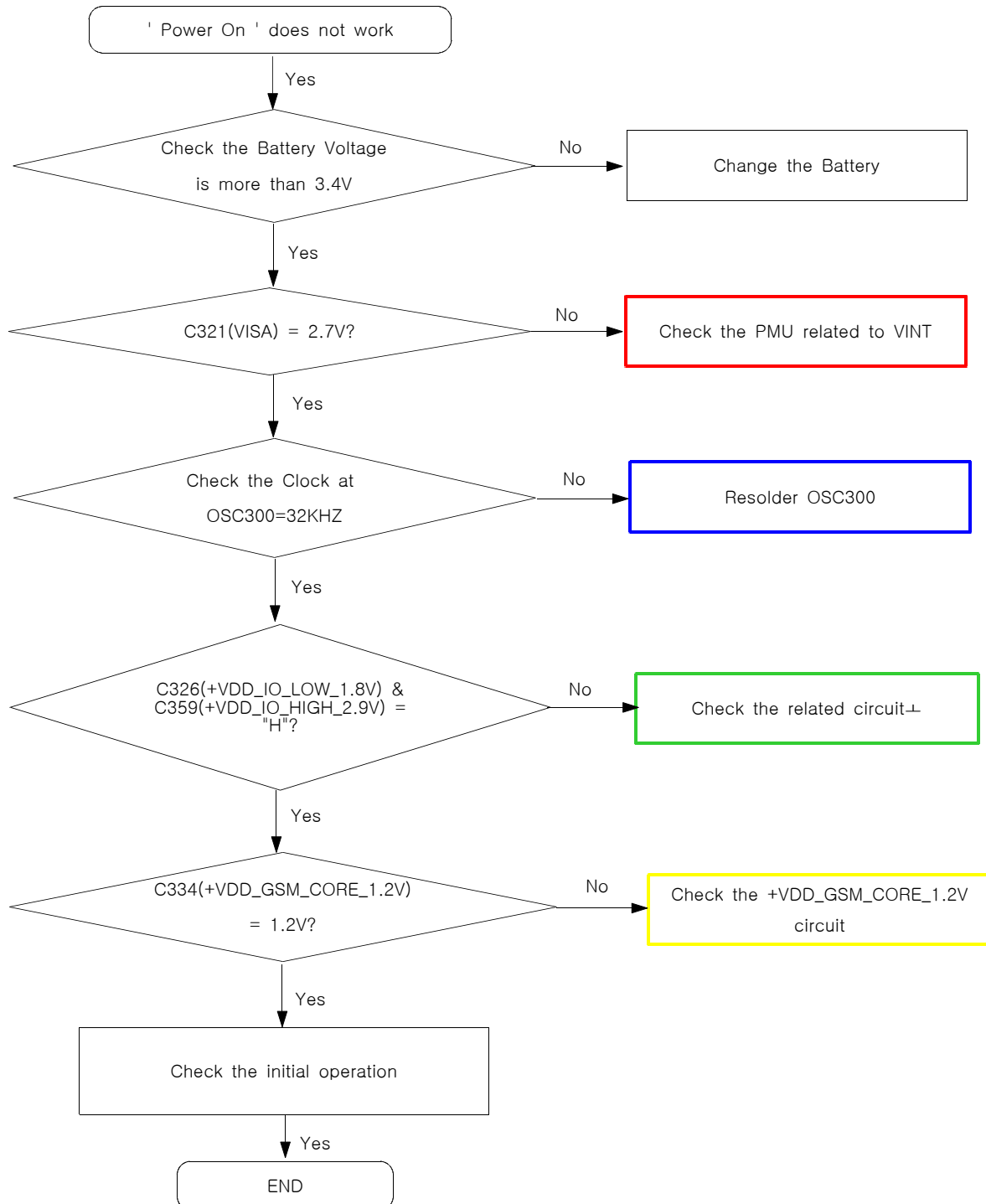
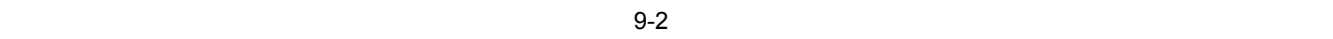


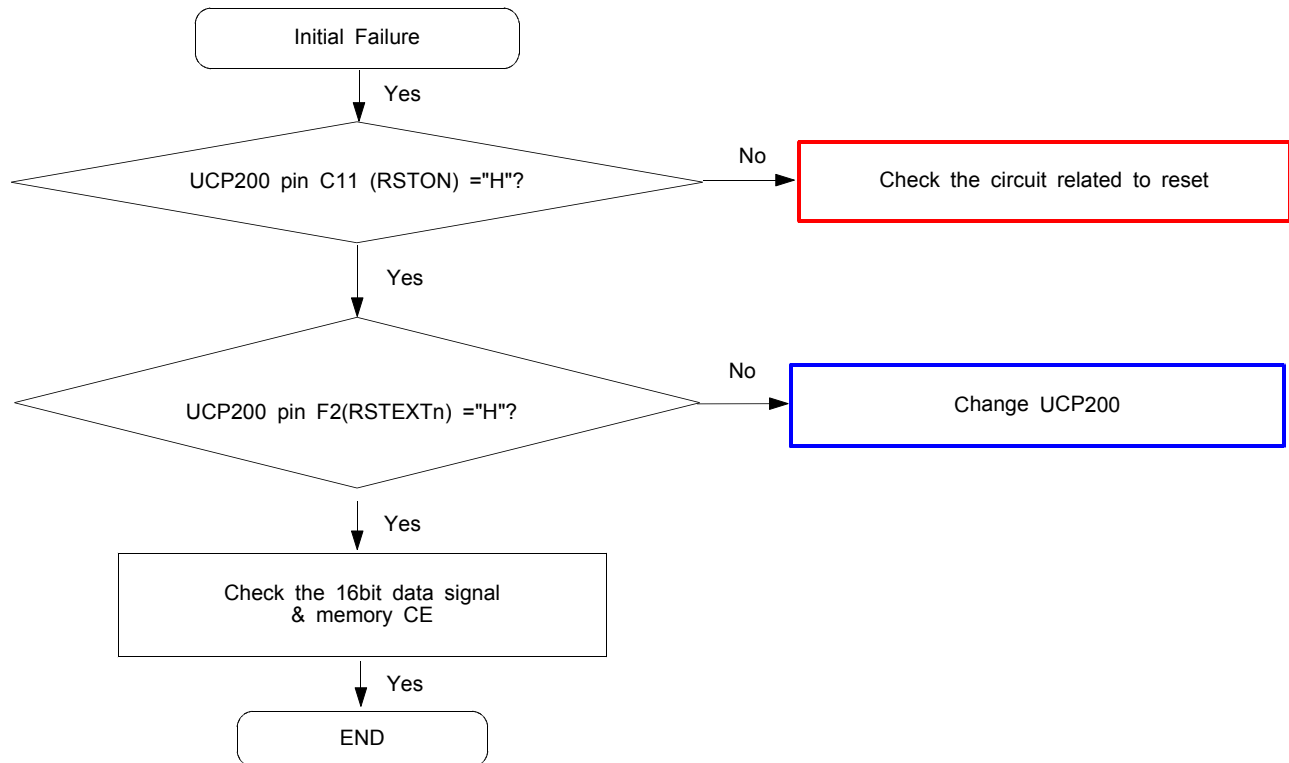
9. Flow Chart of Troubleshooting

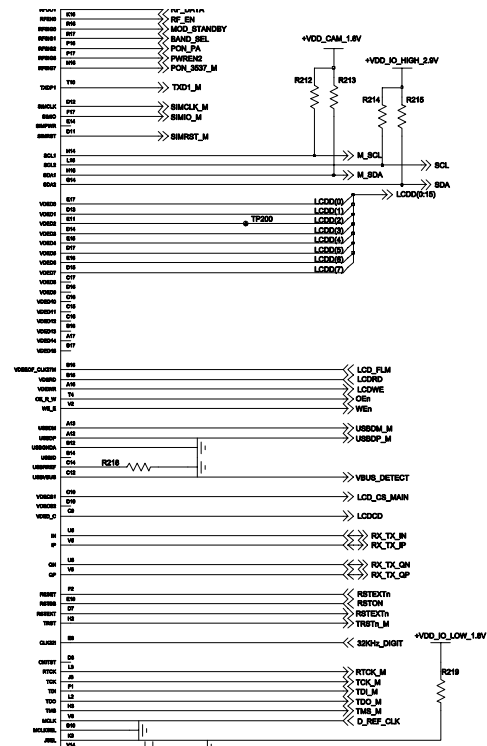
9-1. Power On



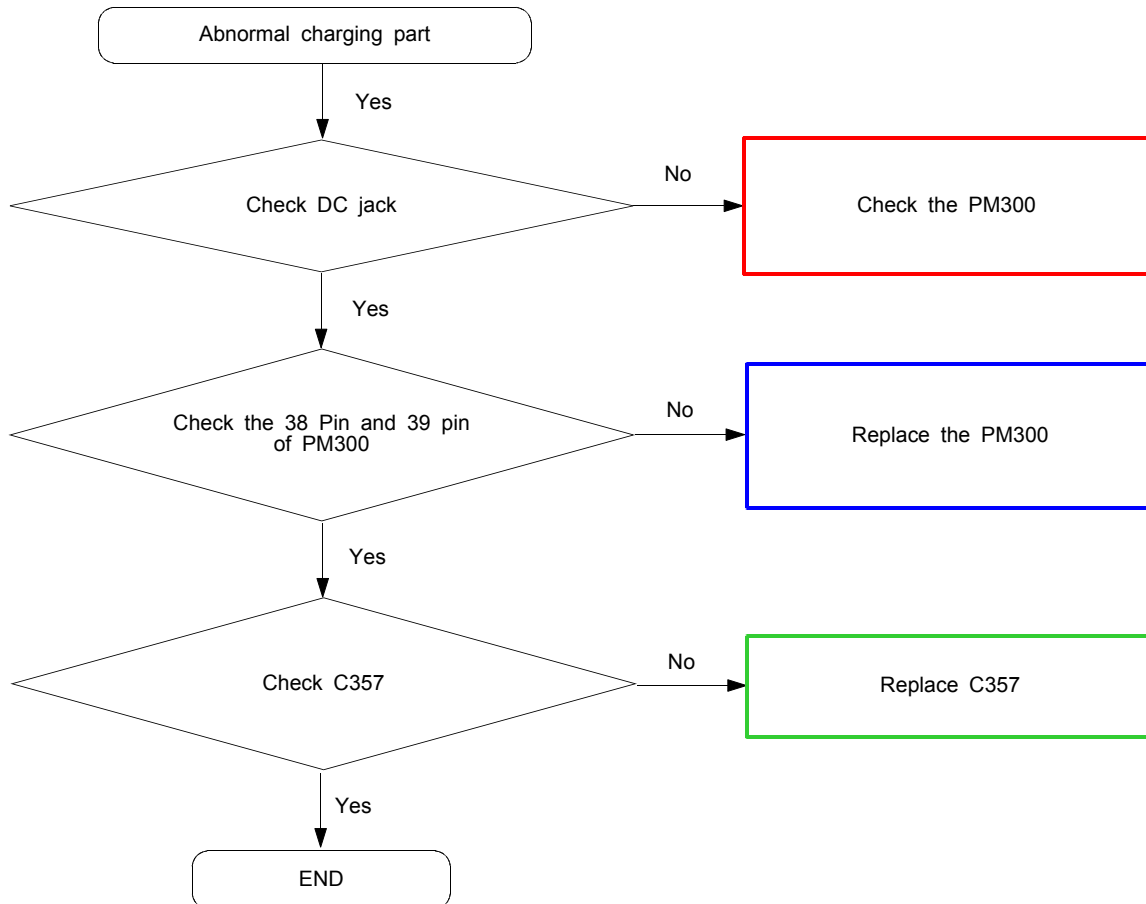


9-2. Initial





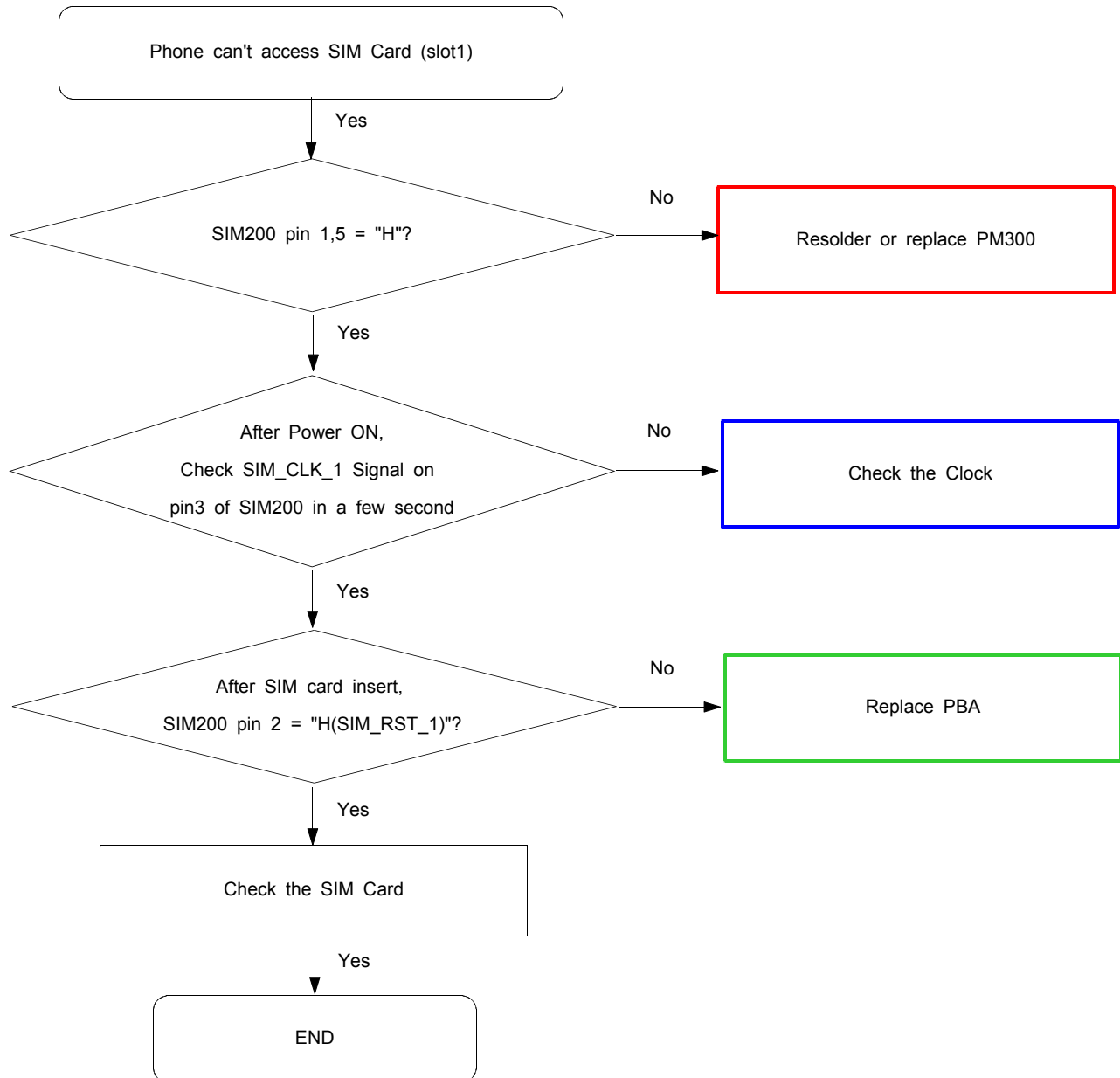
9-3. Charging Part

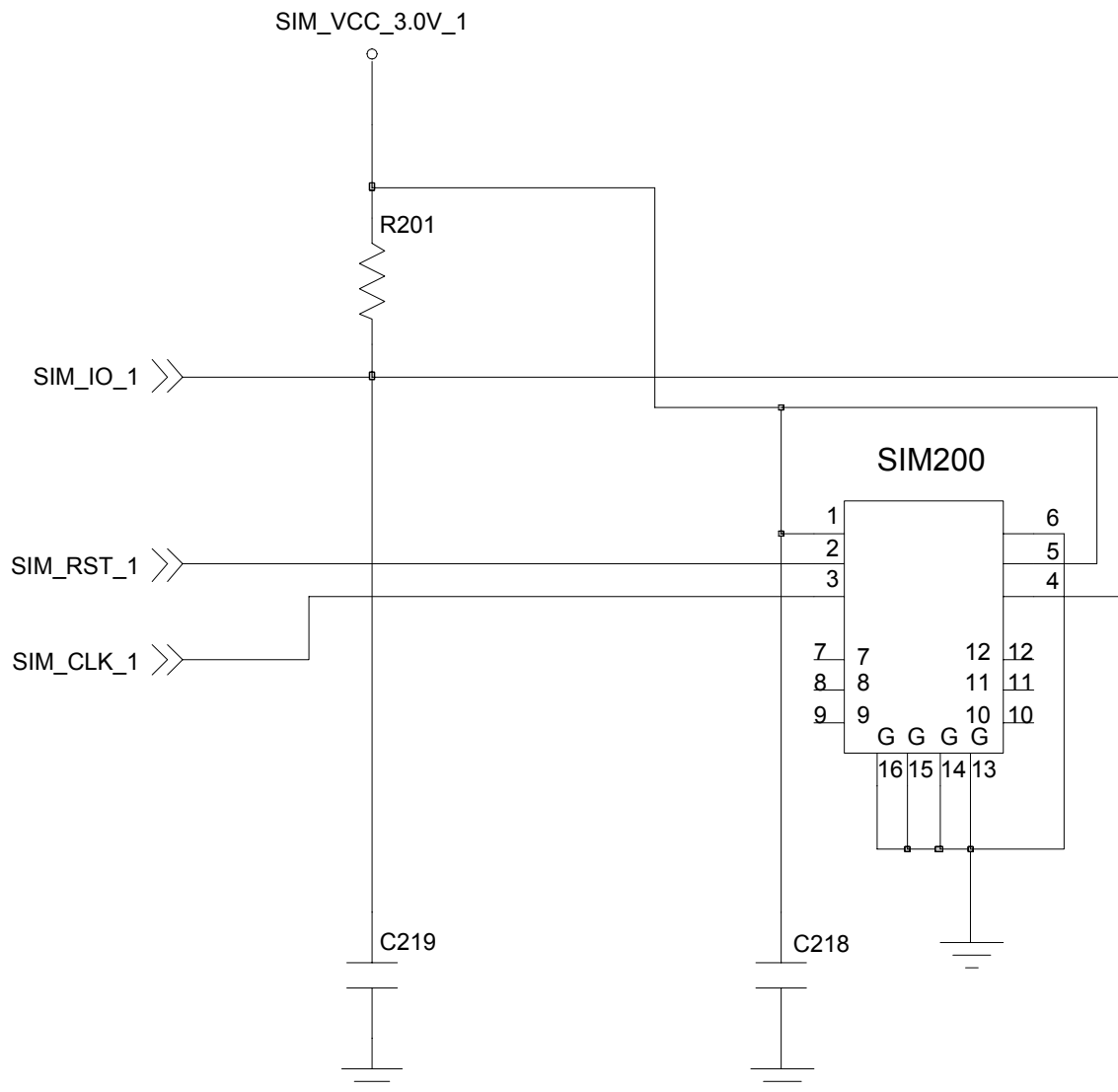


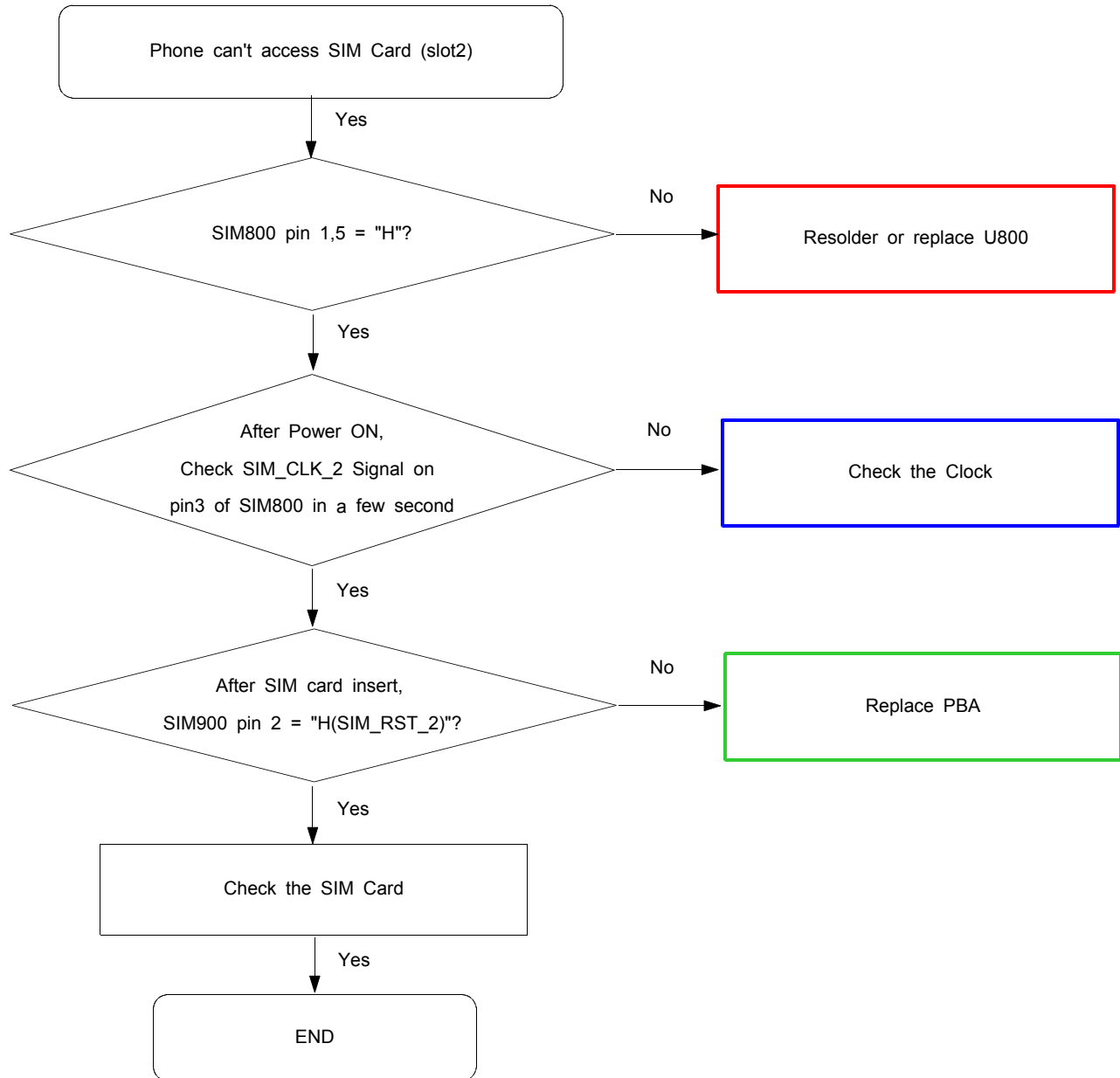


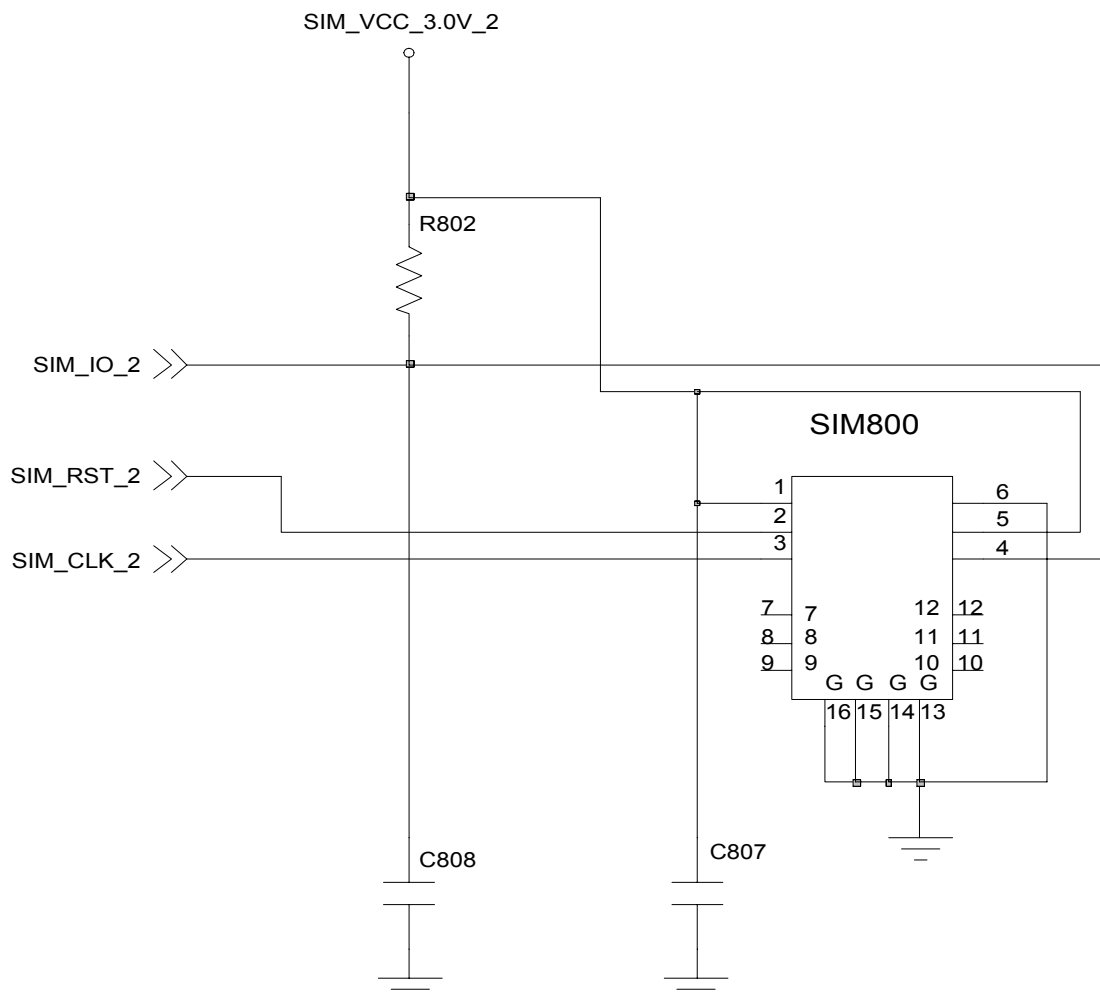
9-4. Sim Part

1) Master



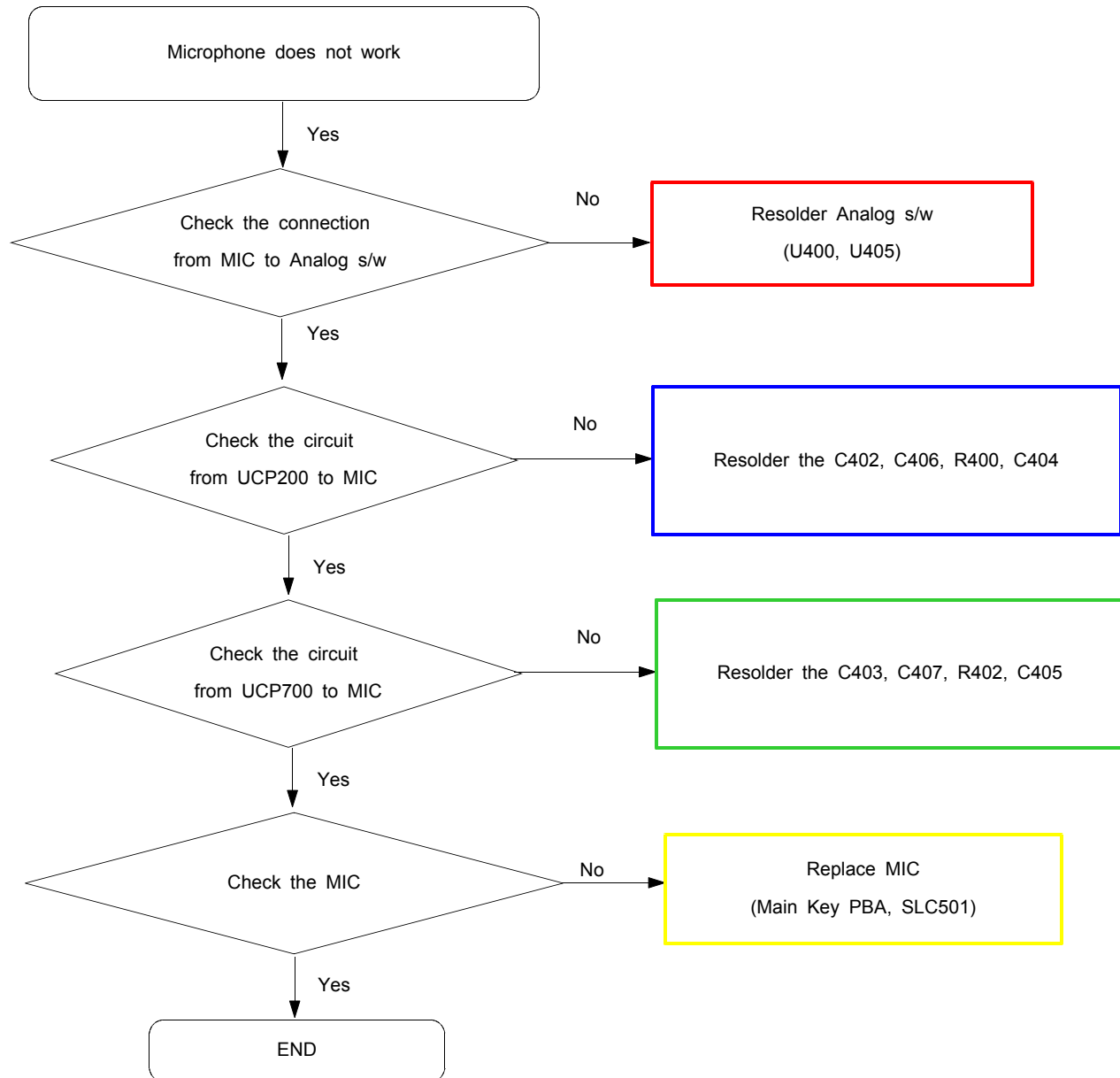


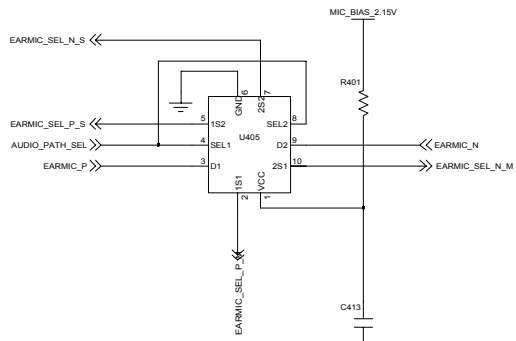
2)Slave



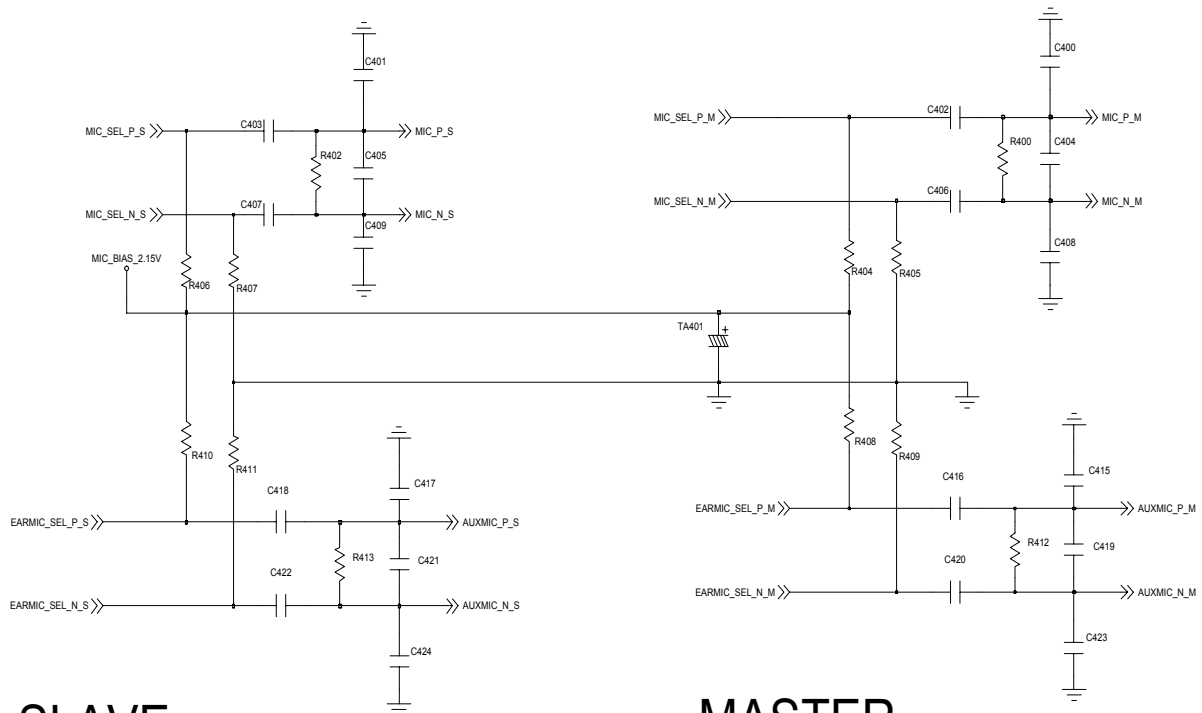
SIM2 [SLAVE]

9-5. Microphone Part



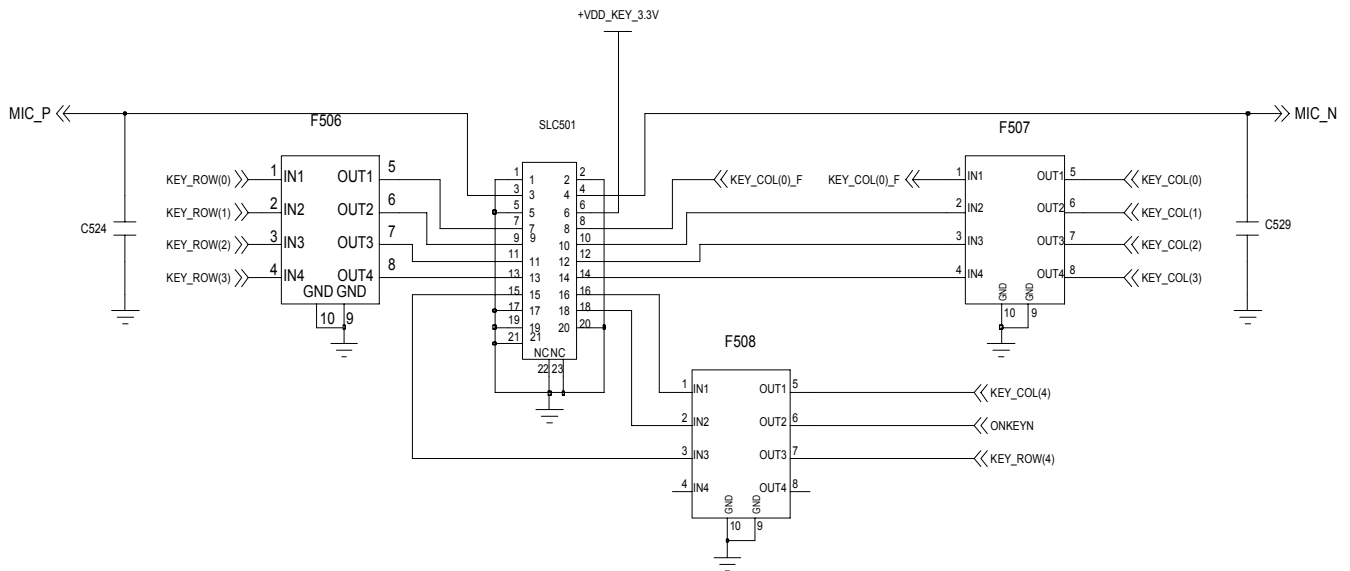


EARMIC SEL

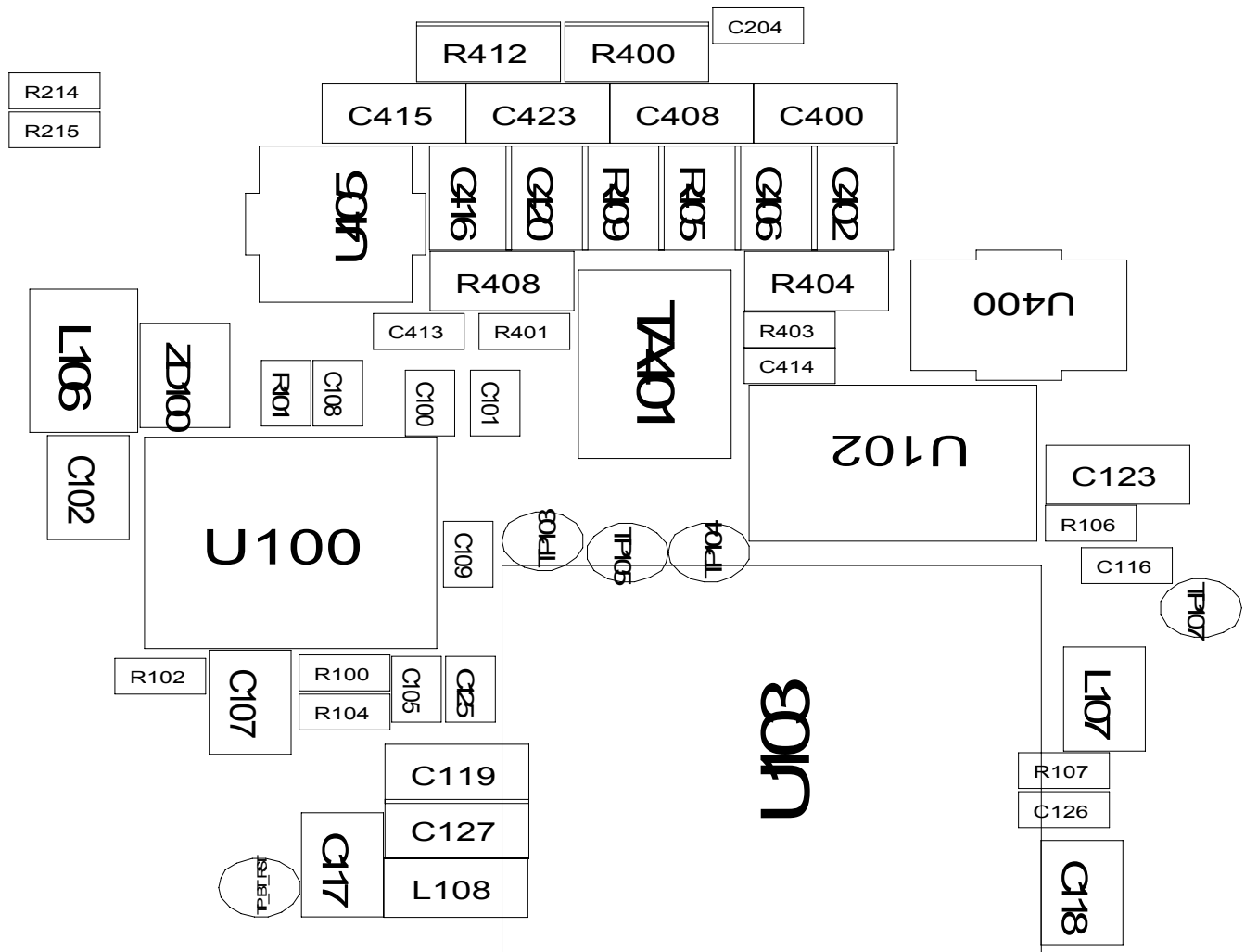


MASTER

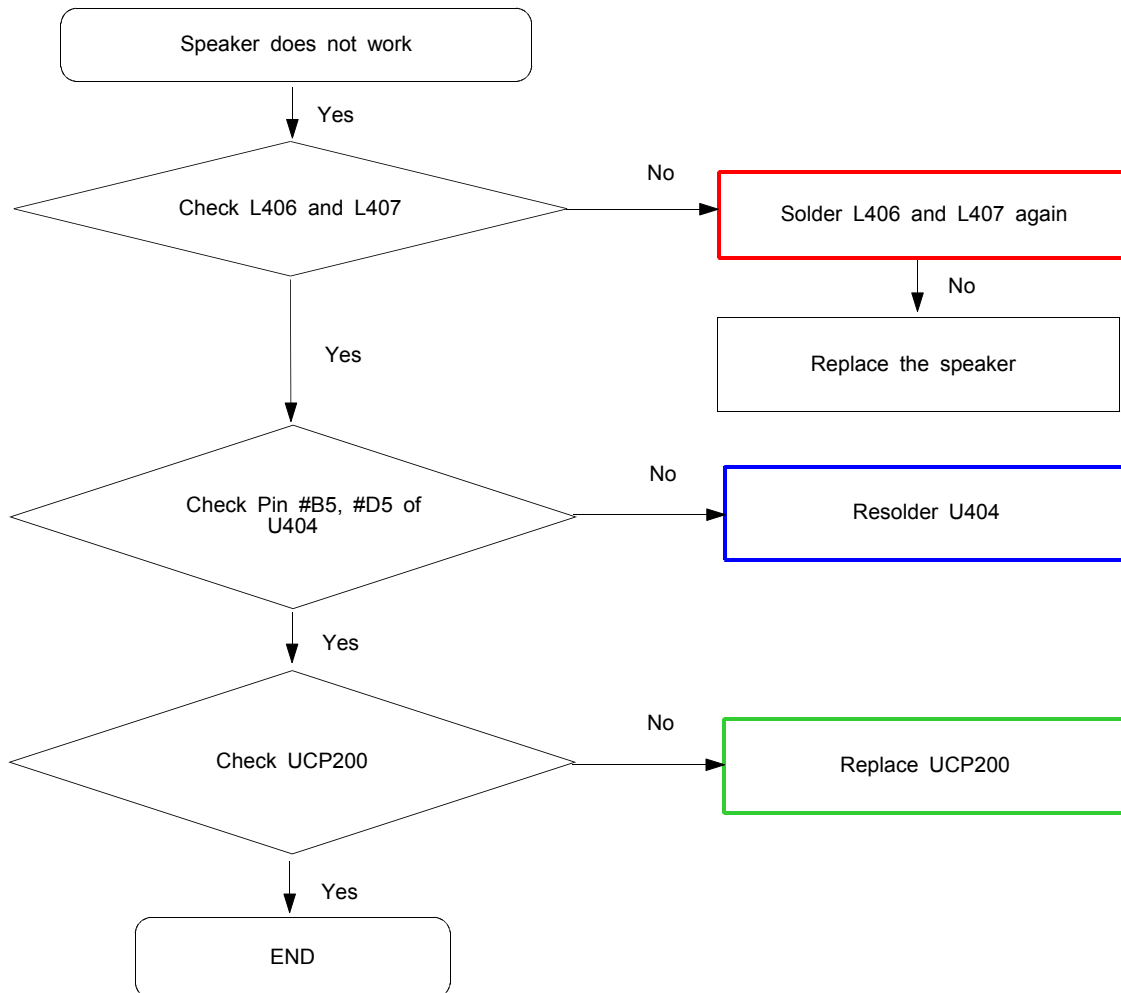
MICROPHONE

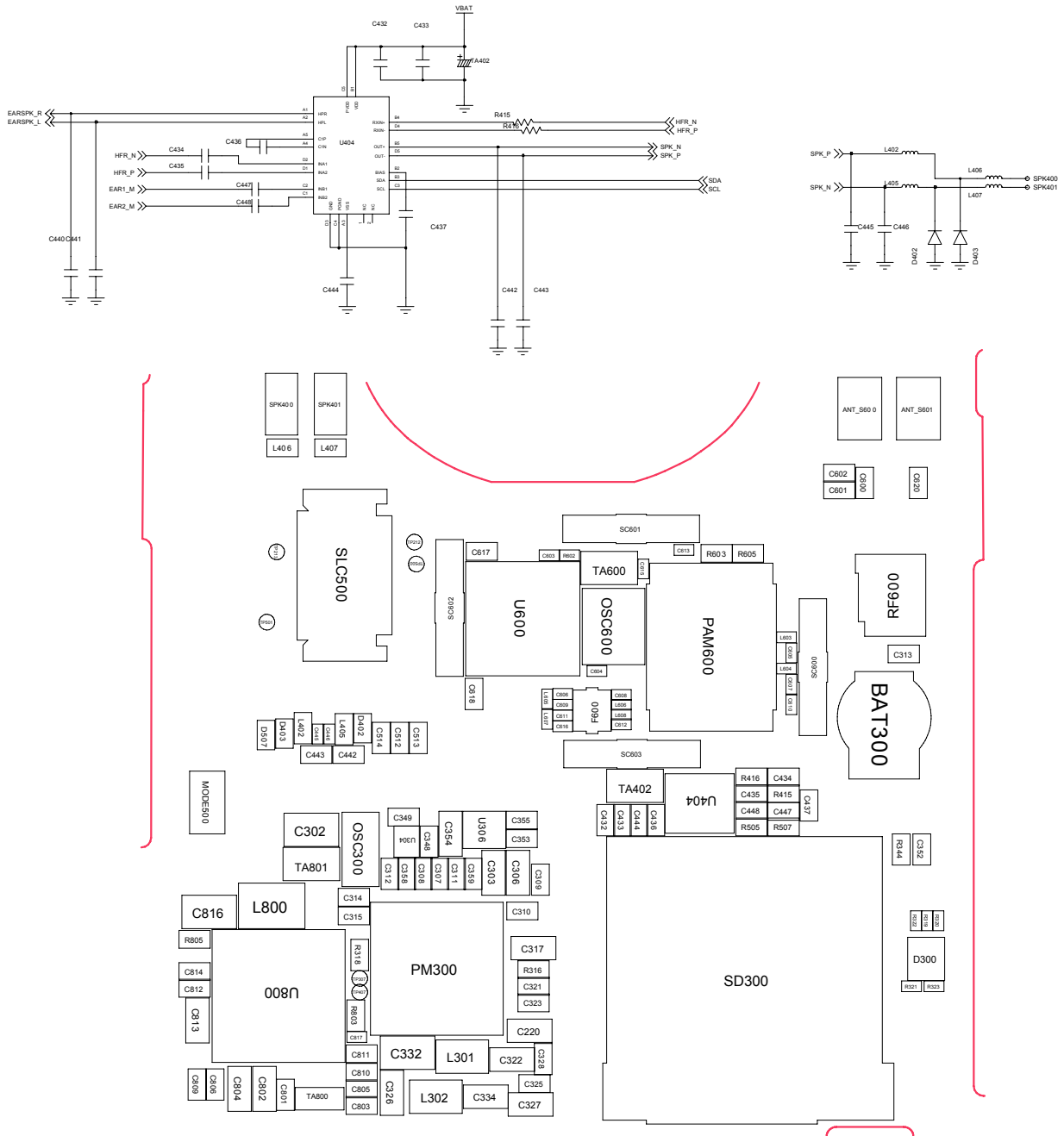


KEY_CONNECTOR

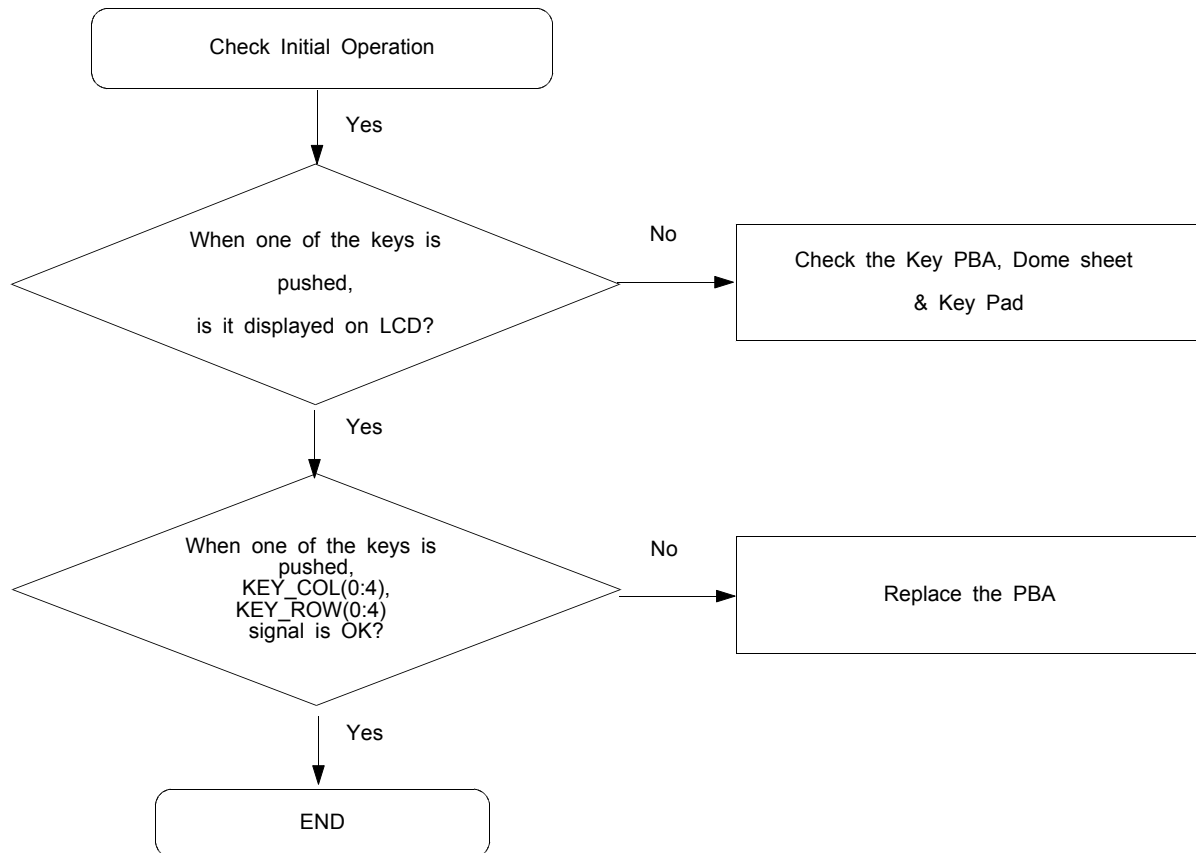


9-6. Speaker Part(Melody)

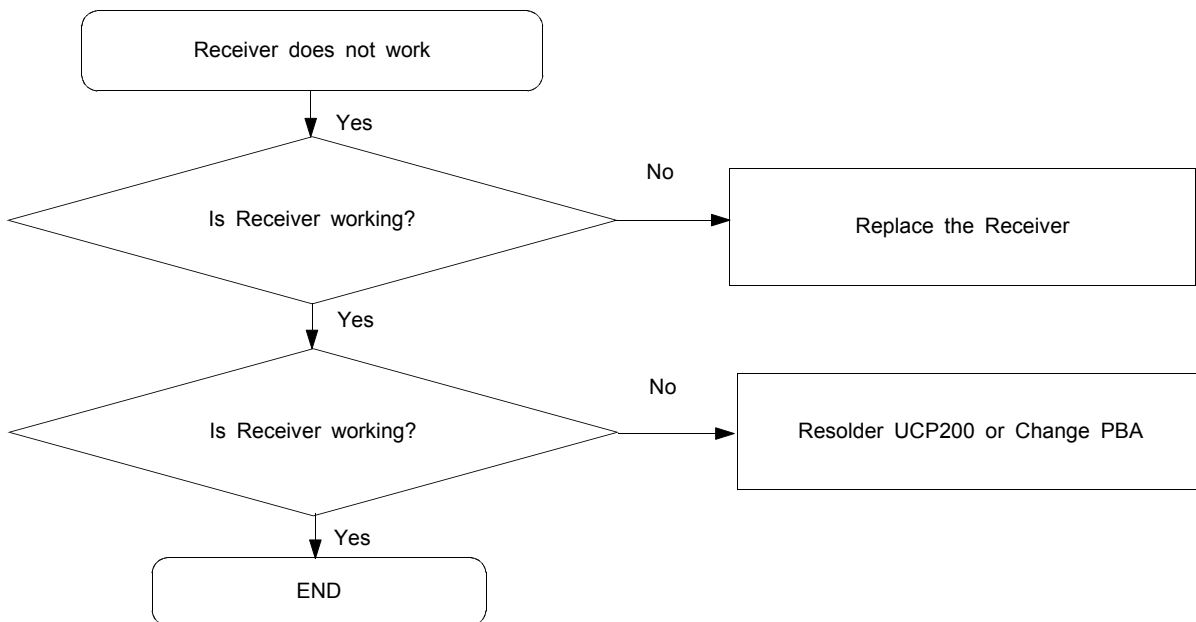




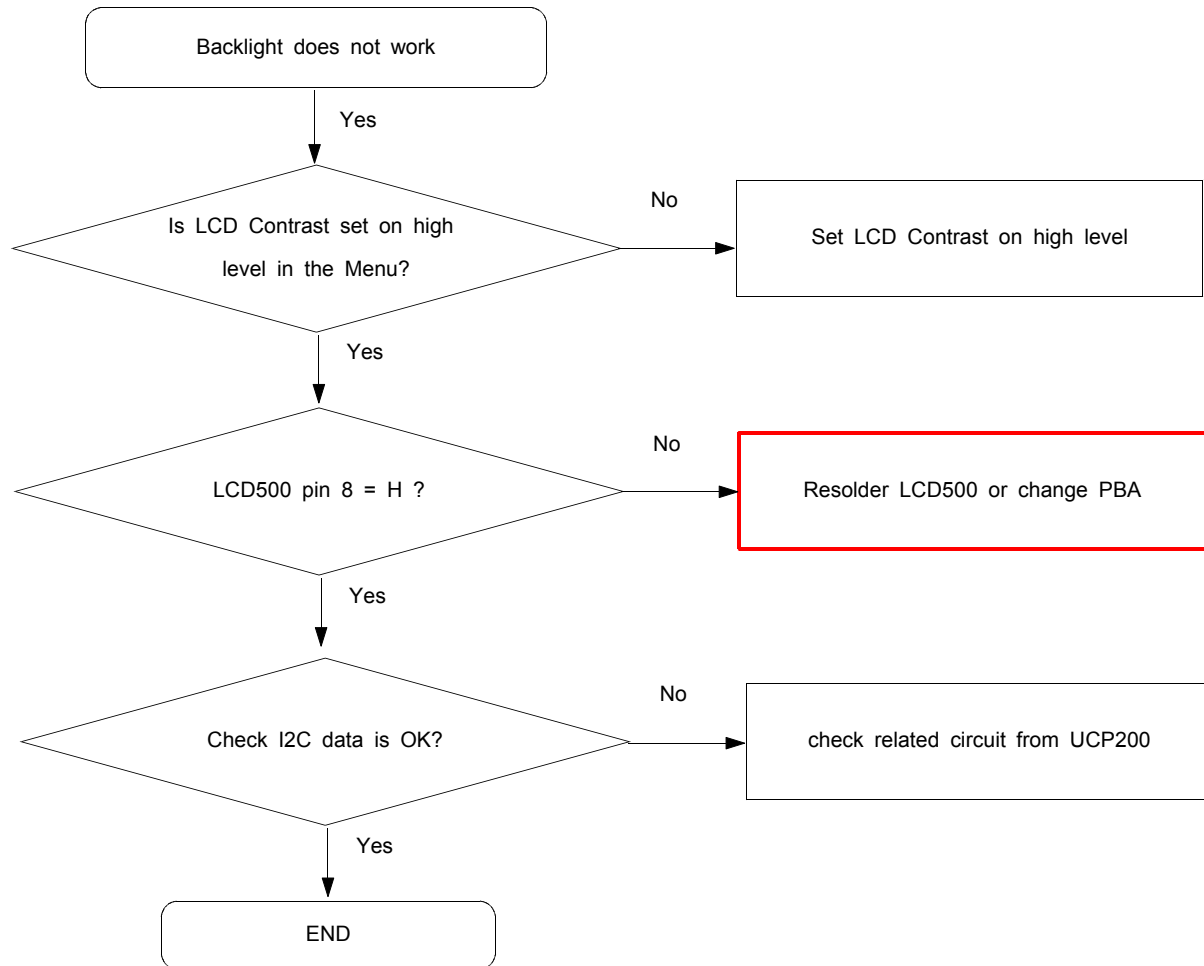
9-7. Key Data Input



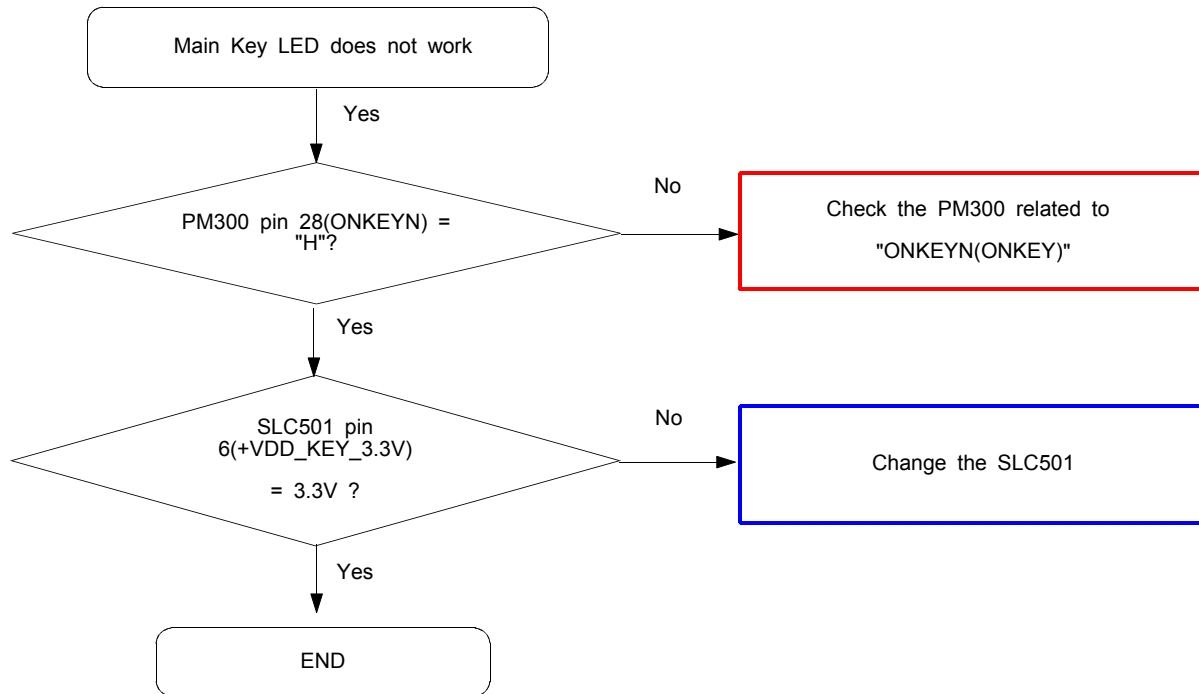
9-8. Receiver Part



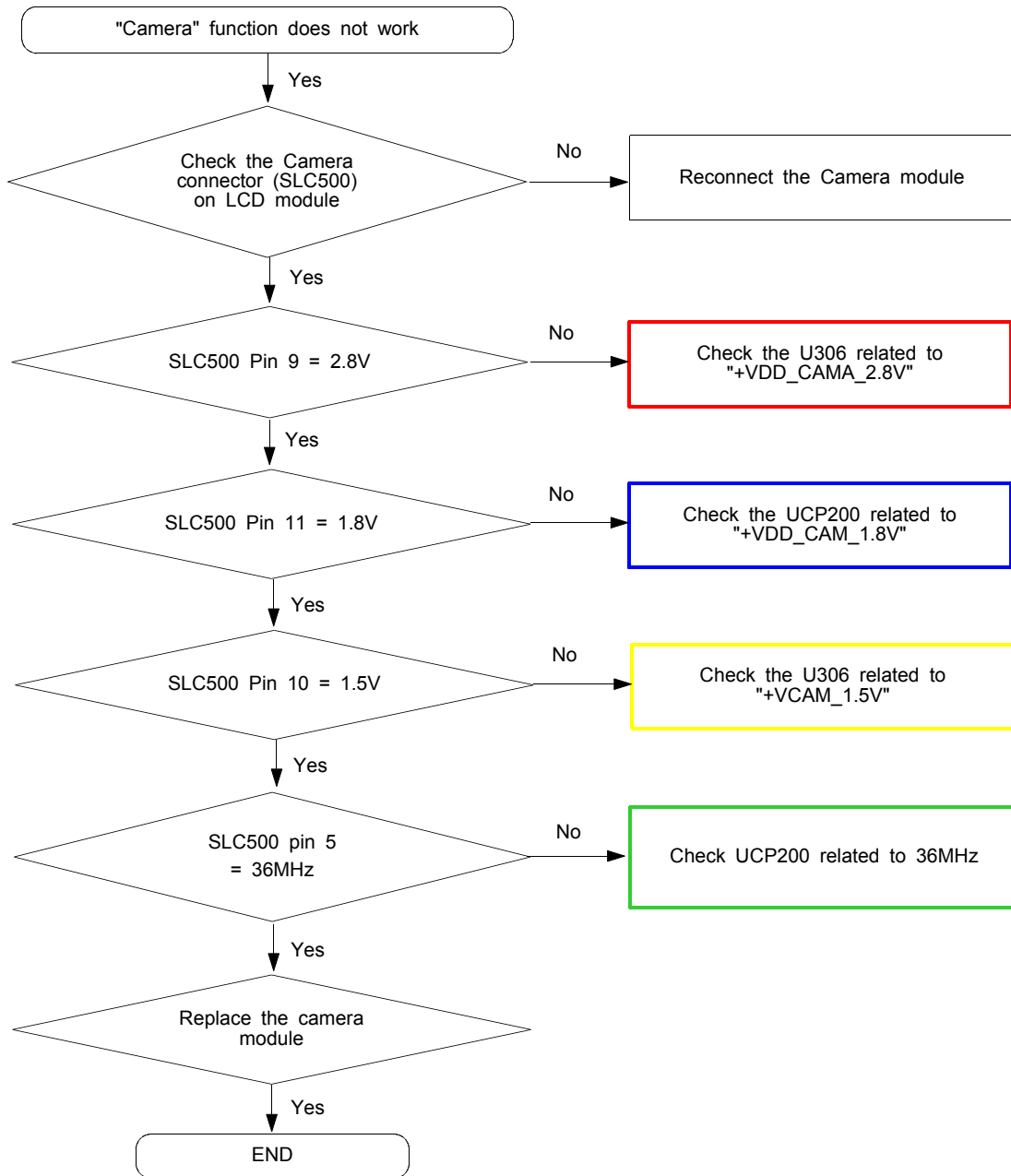
9-9. Back Light (for Color Main LCD)

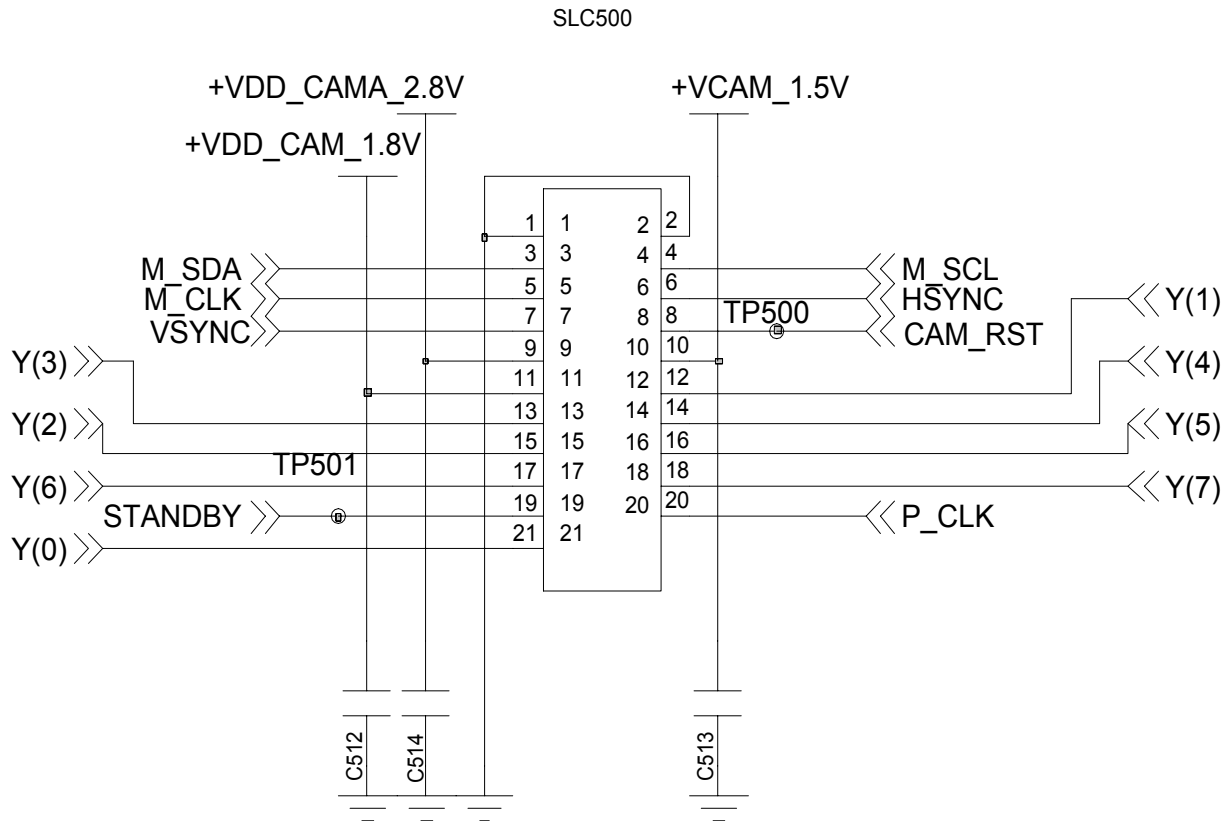


9-10. Key Back Light

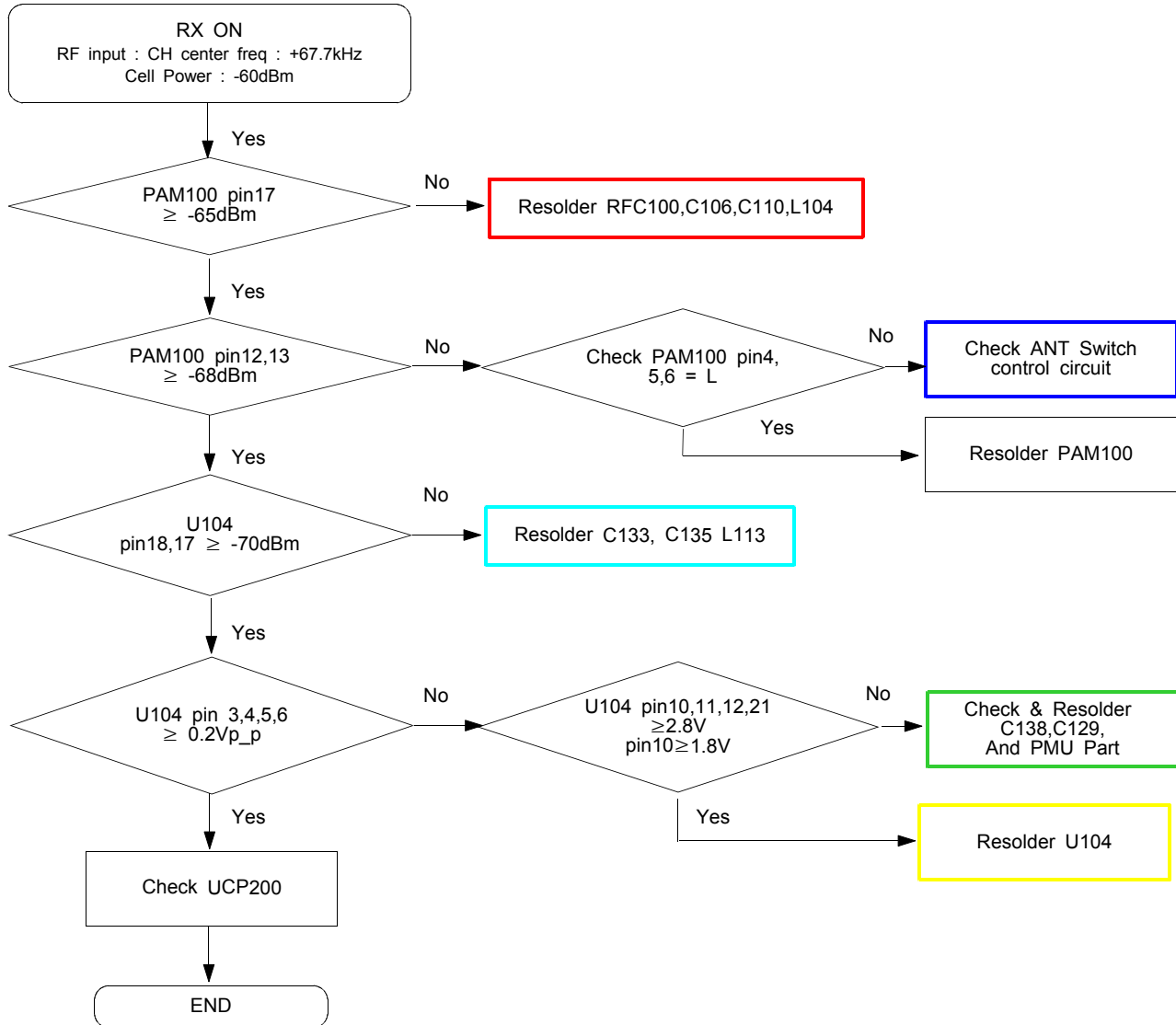


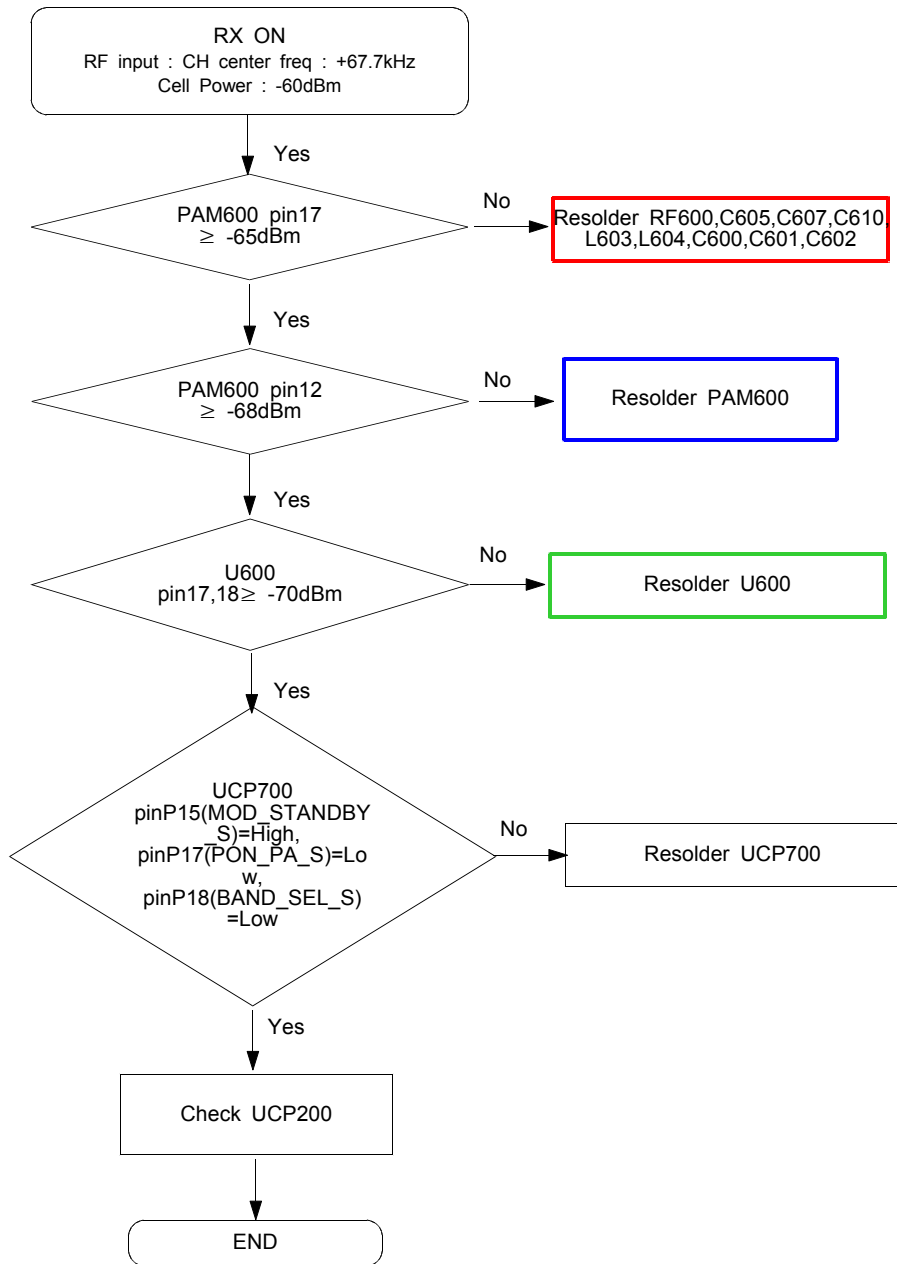
9-11. Camera part





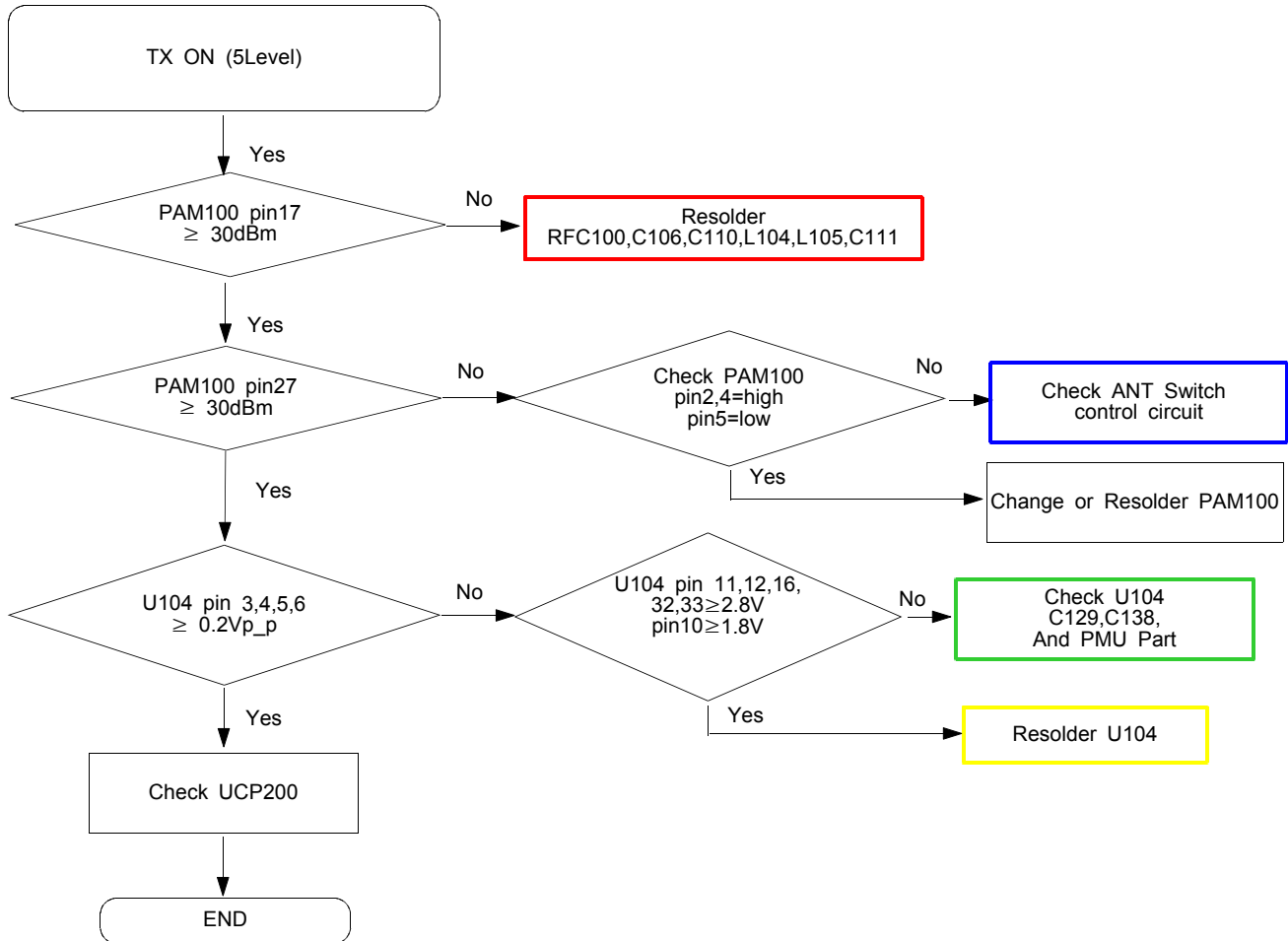
CAM CONNECTOR

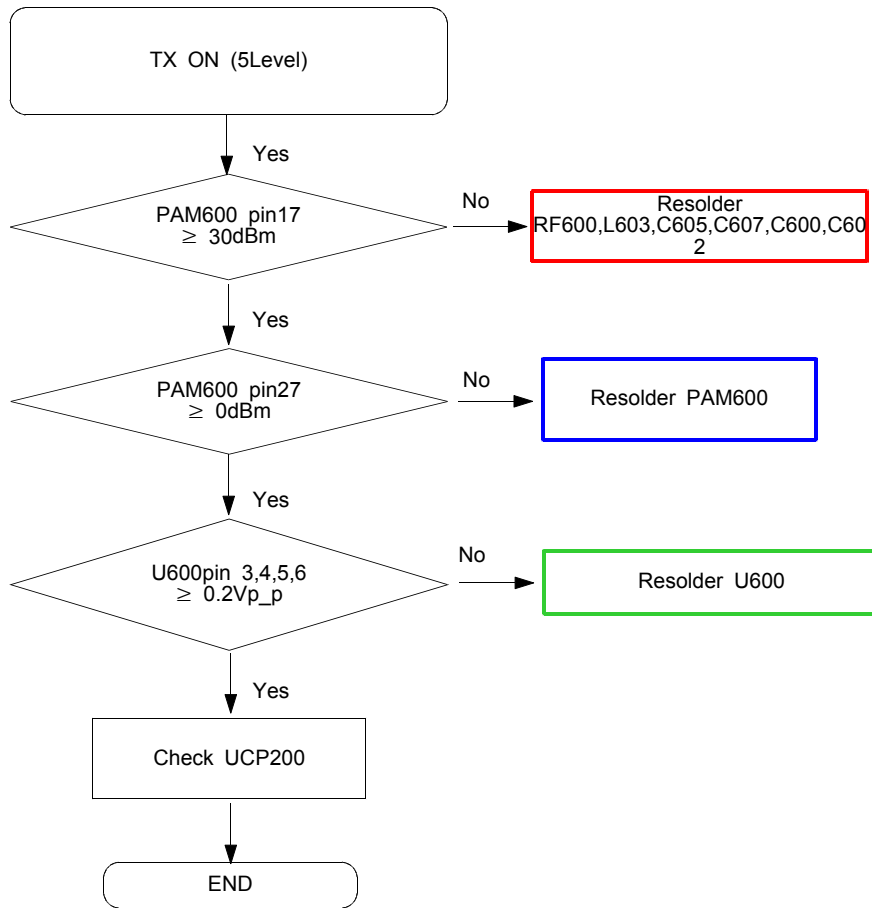
9-12. GSM Receiver**1) Master**

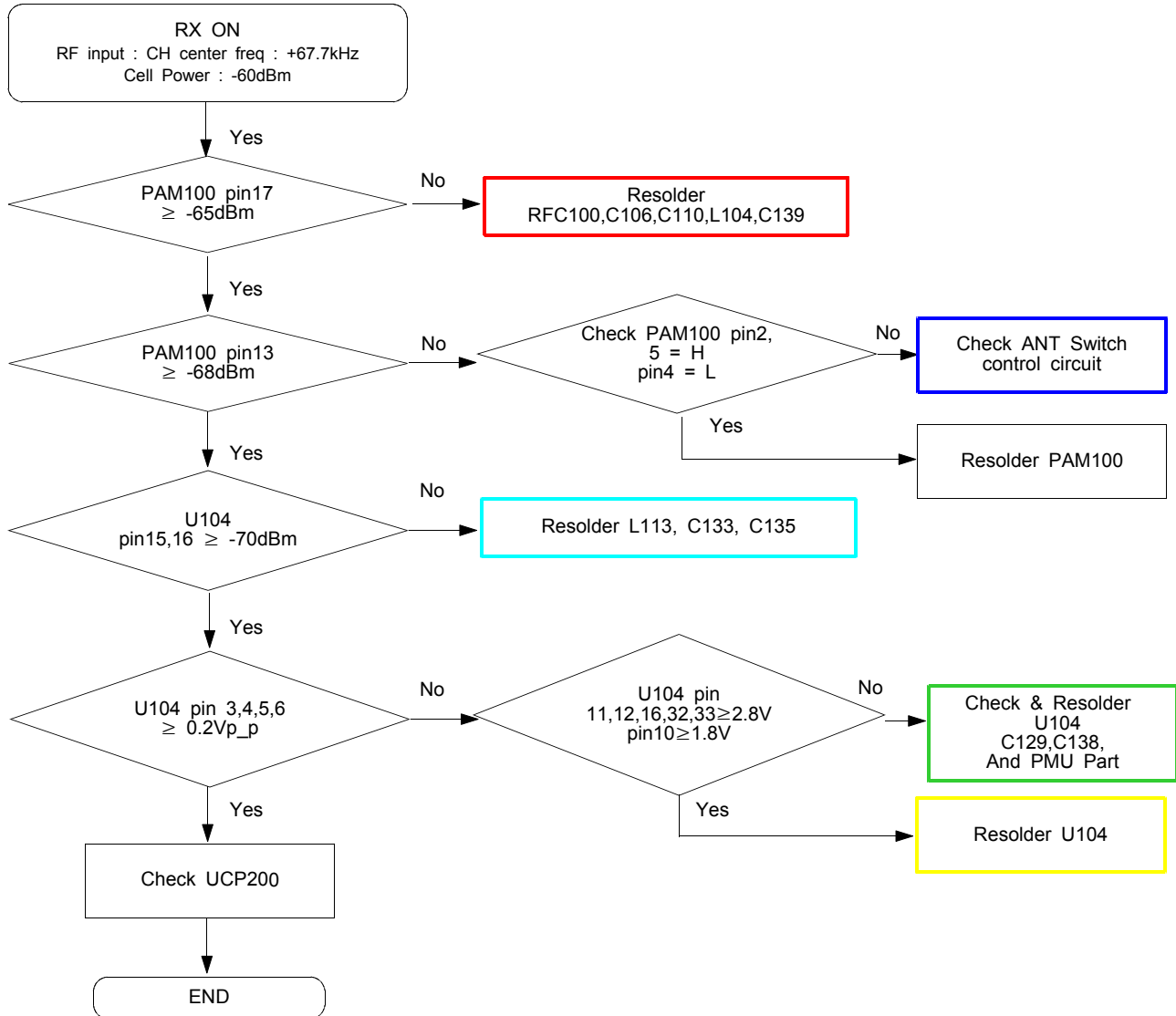
2)Slave

9-13. GSM Transmitter

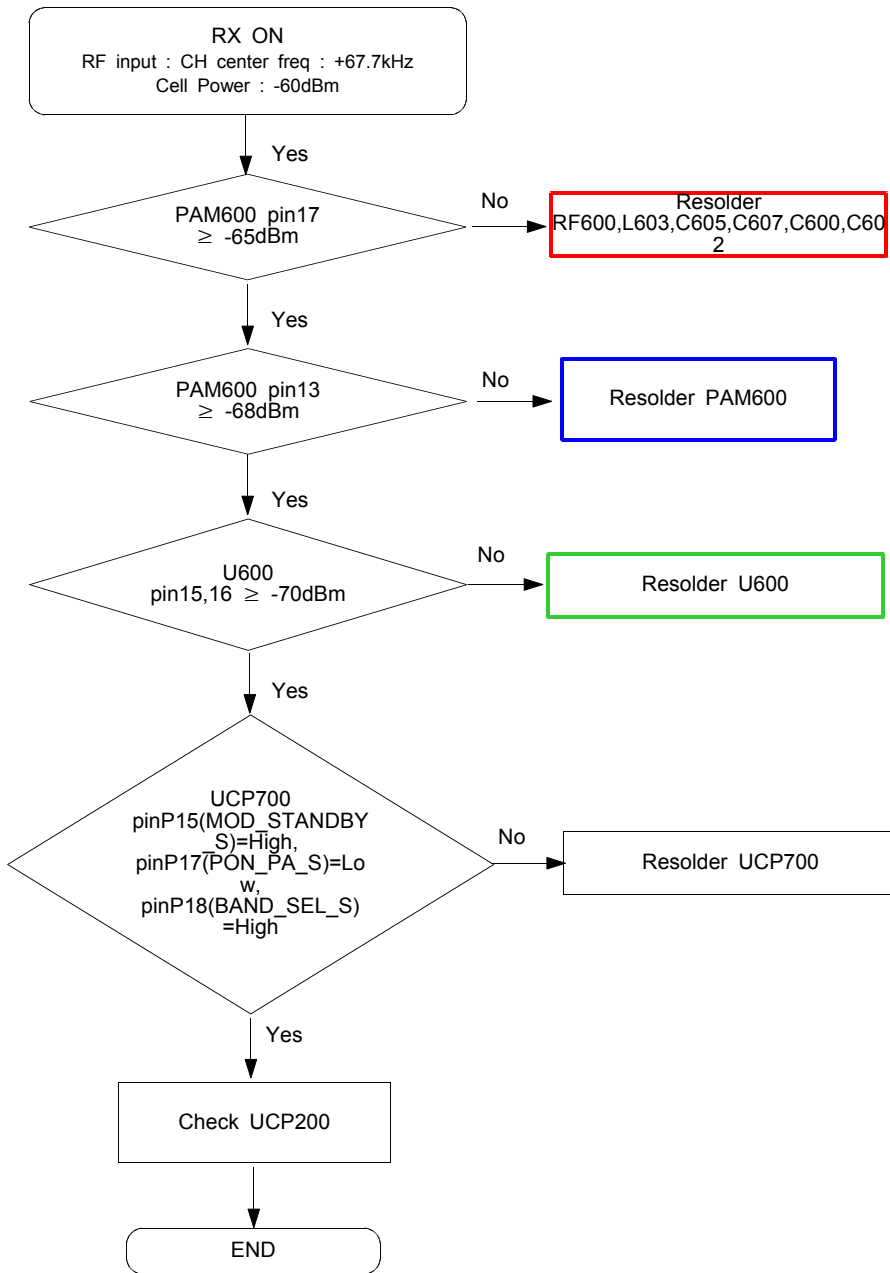
1) Master



2)Slave

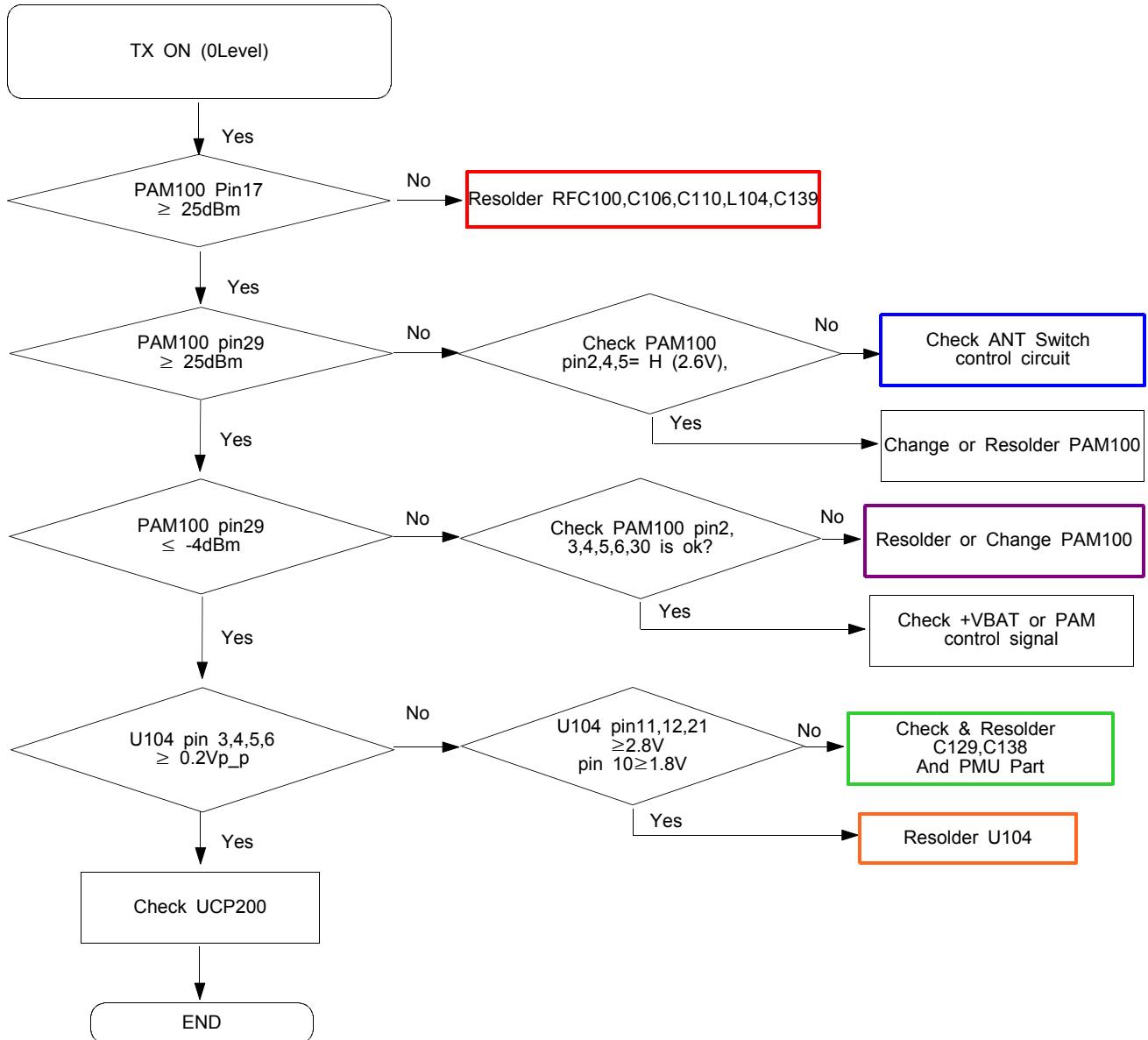
9-14. DCS Receiver**1)Master**

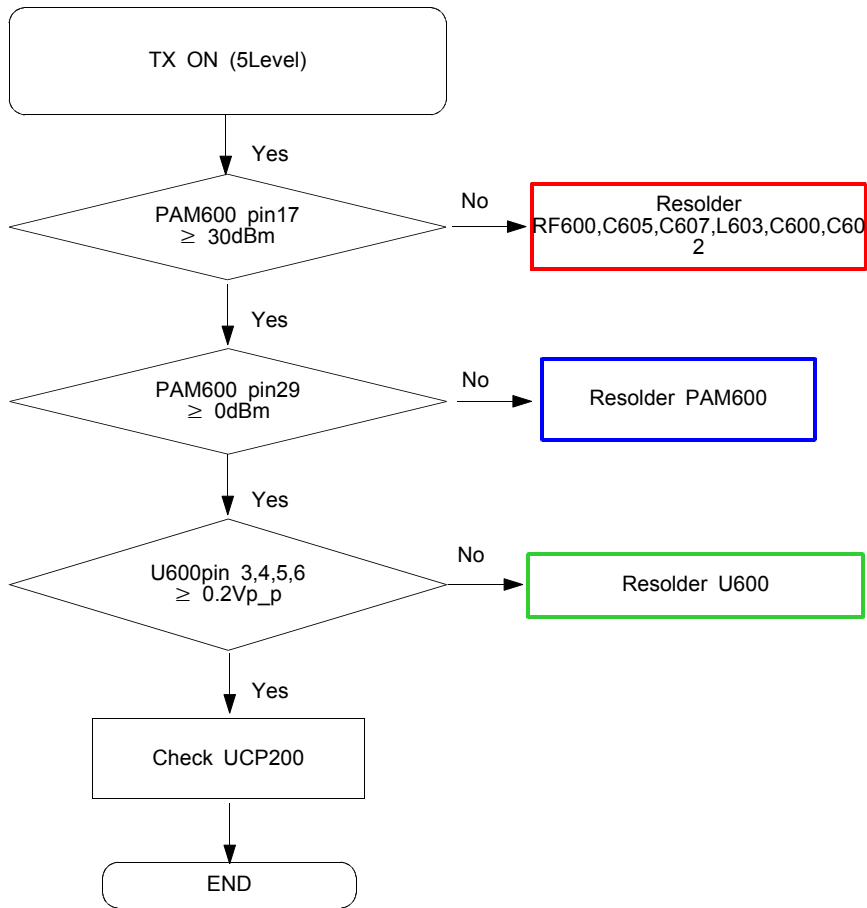
2)Slave



9-15. DCS Transmitter

1) Master

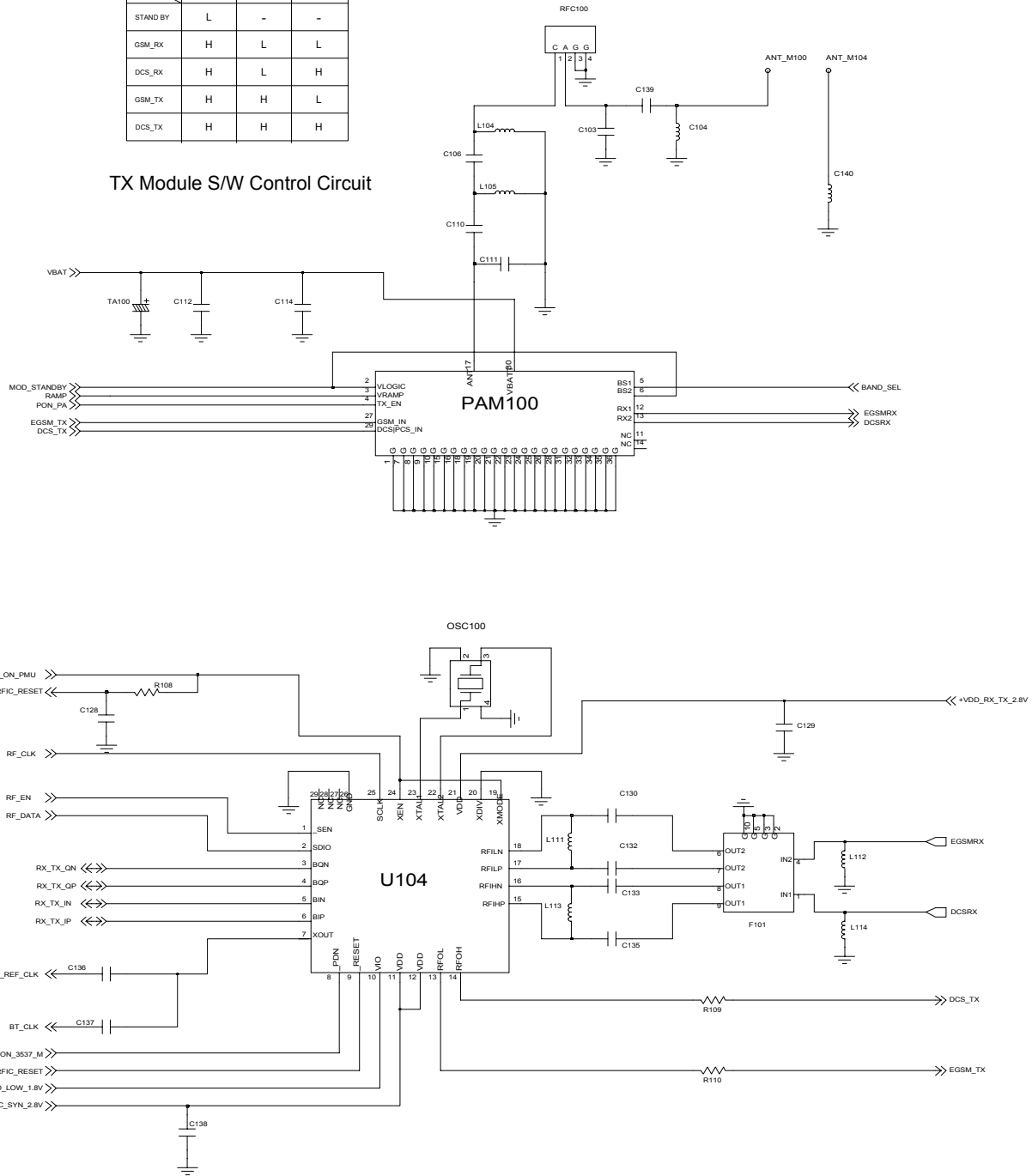


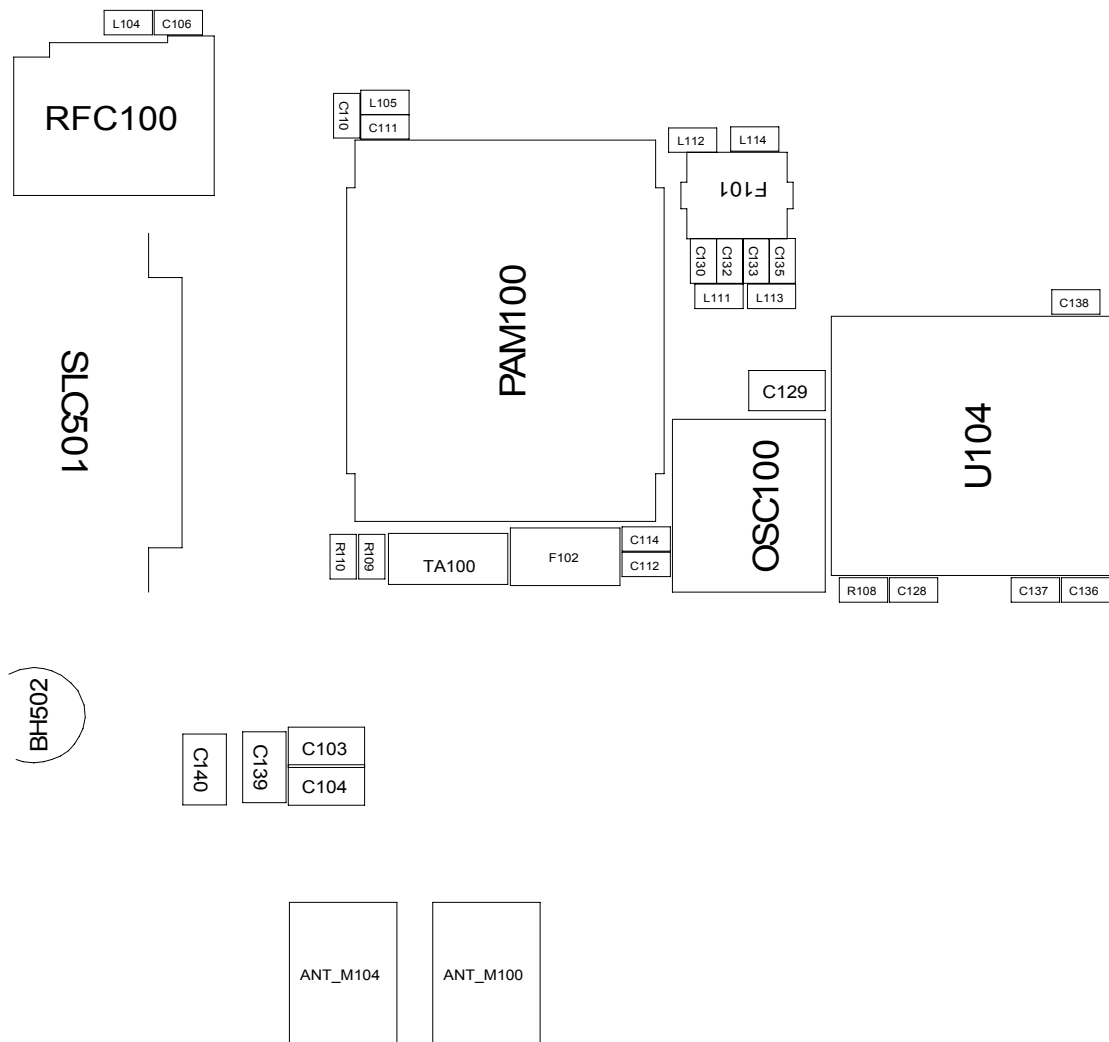
2)Slave

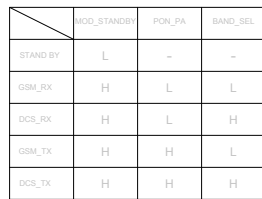
[Master] Rx, Tx

	MOD_STANDBY	PON_PA	BAND_SEL
STAND BY	L	-	-
GSM_RX	H	L	L
DCS_RX	H	L	H
GSM_TX	H	H	L
DCS_TX	H	H	H

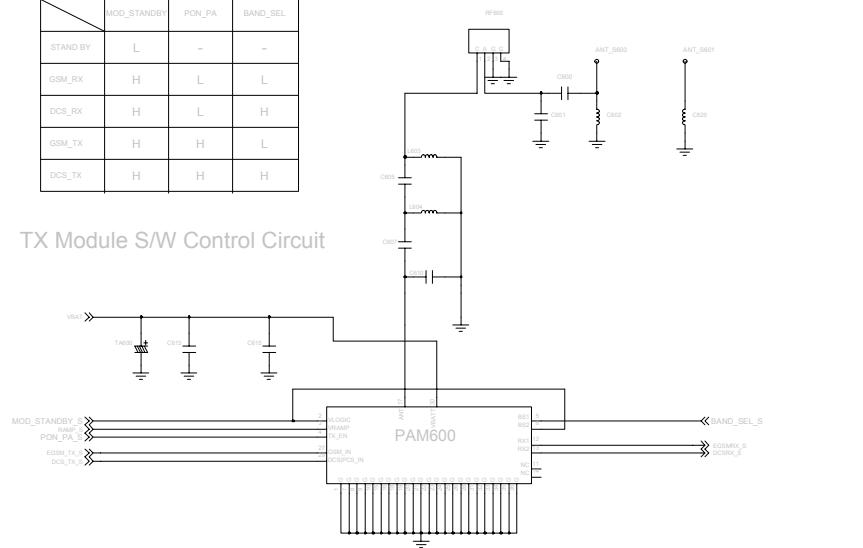
TX Module S/W Control Circuit



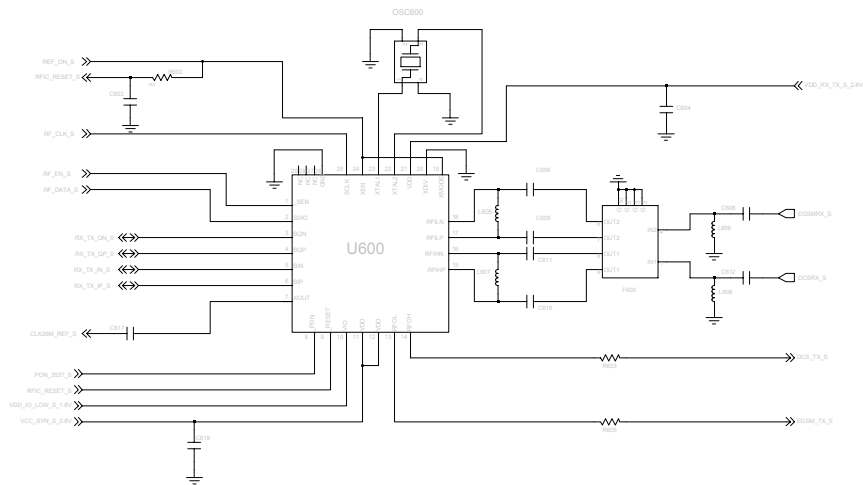


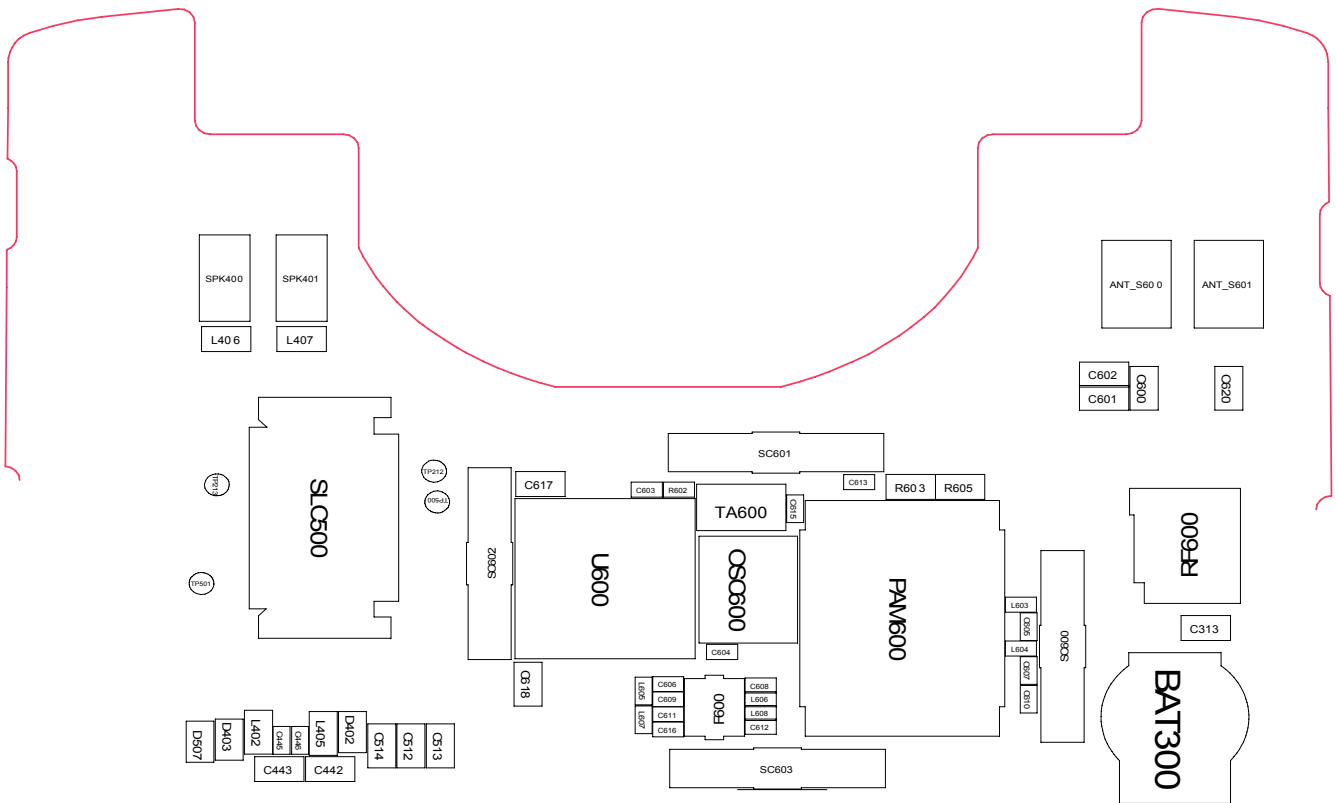


TX Module S/W Control Circuit

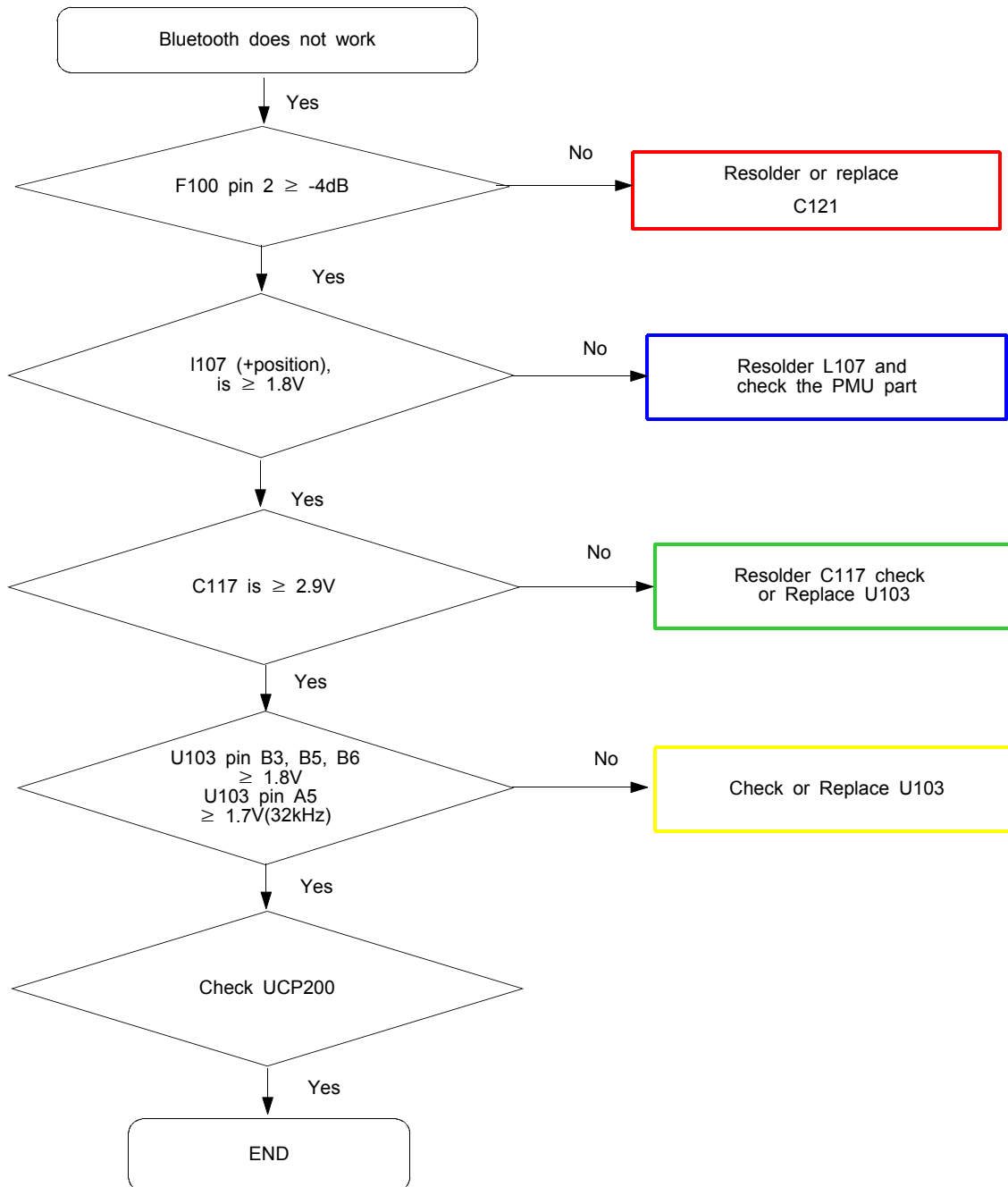


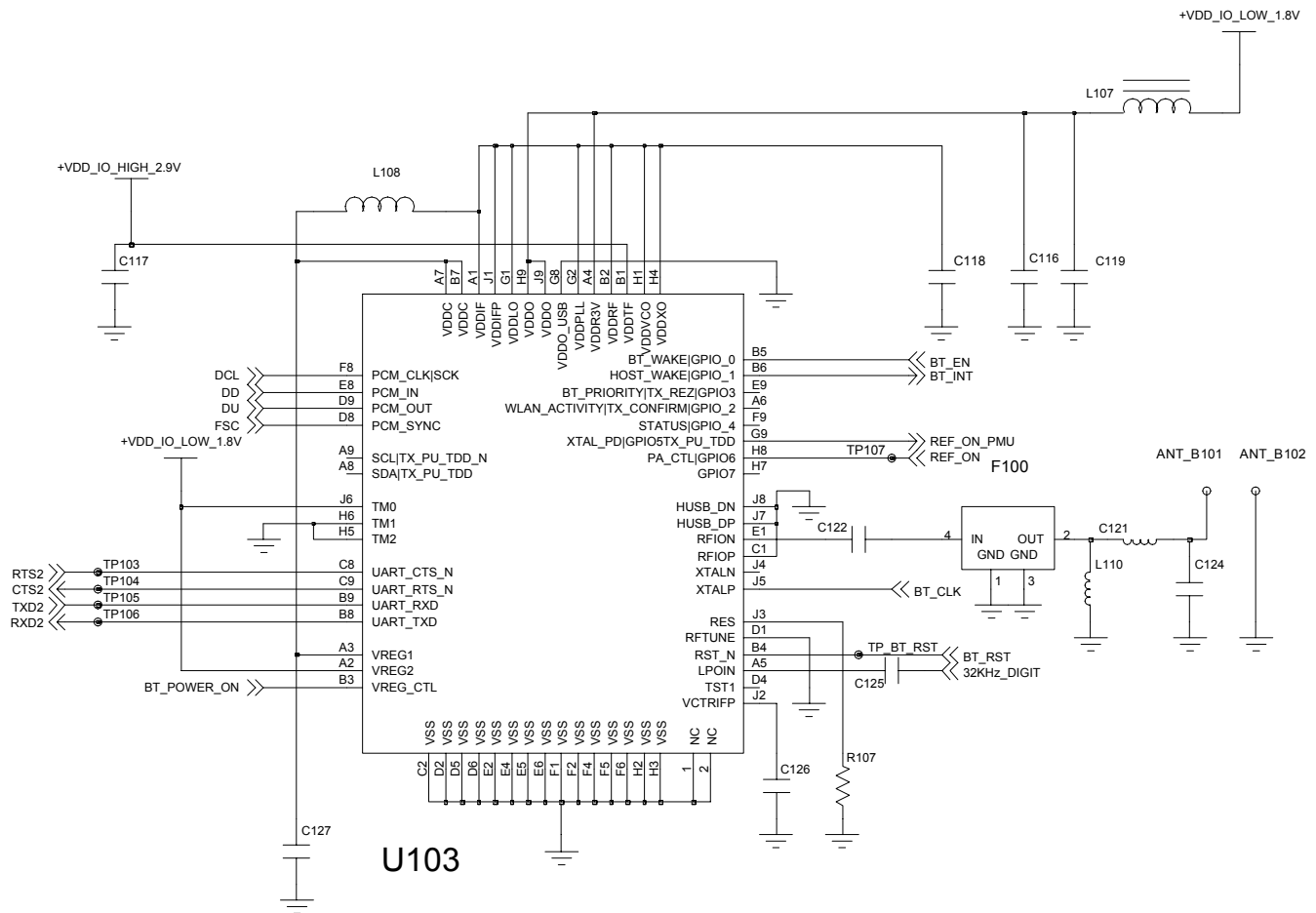
TX Module S/W Control Circuit





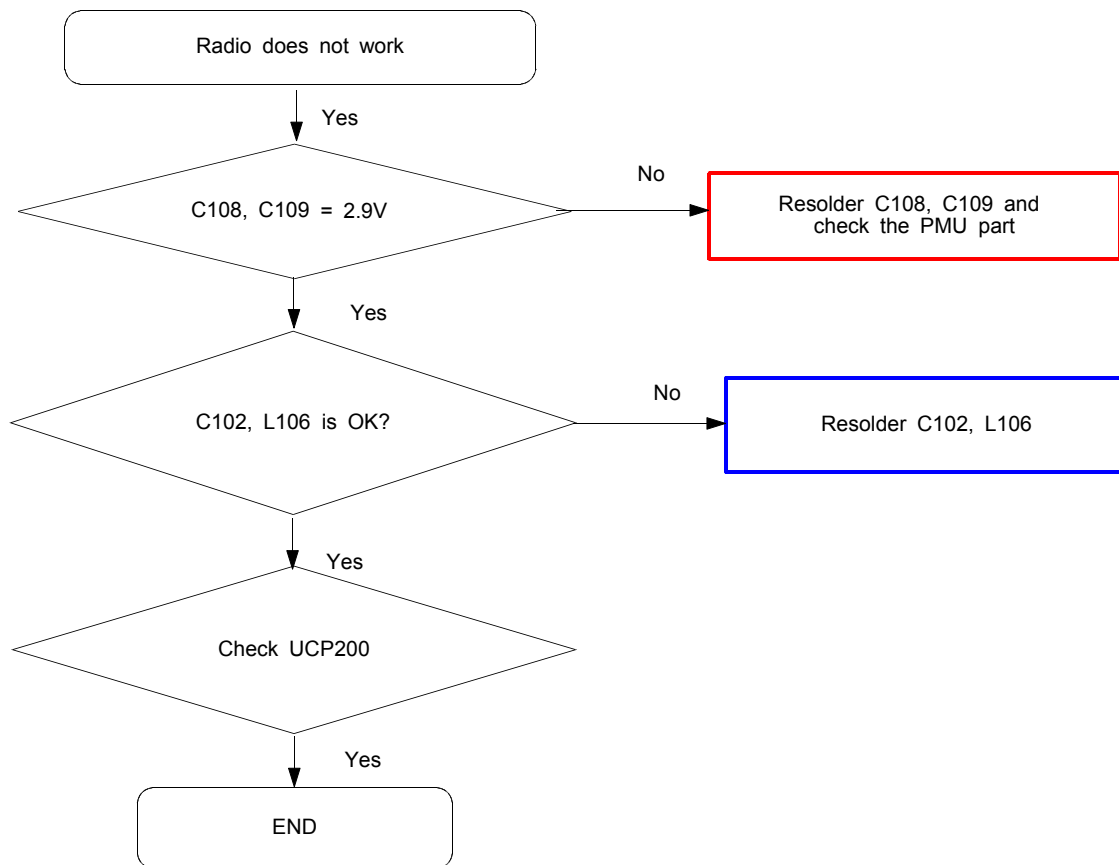
9-18. Bluetooth part

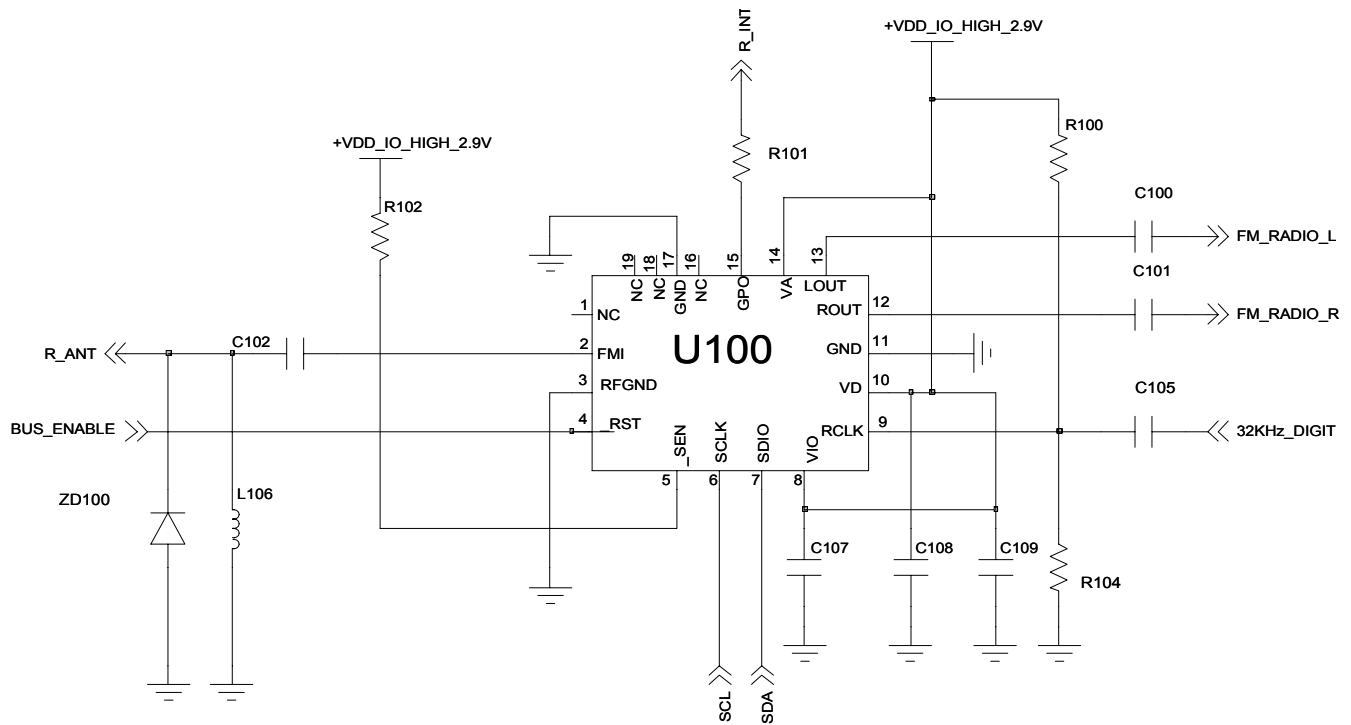




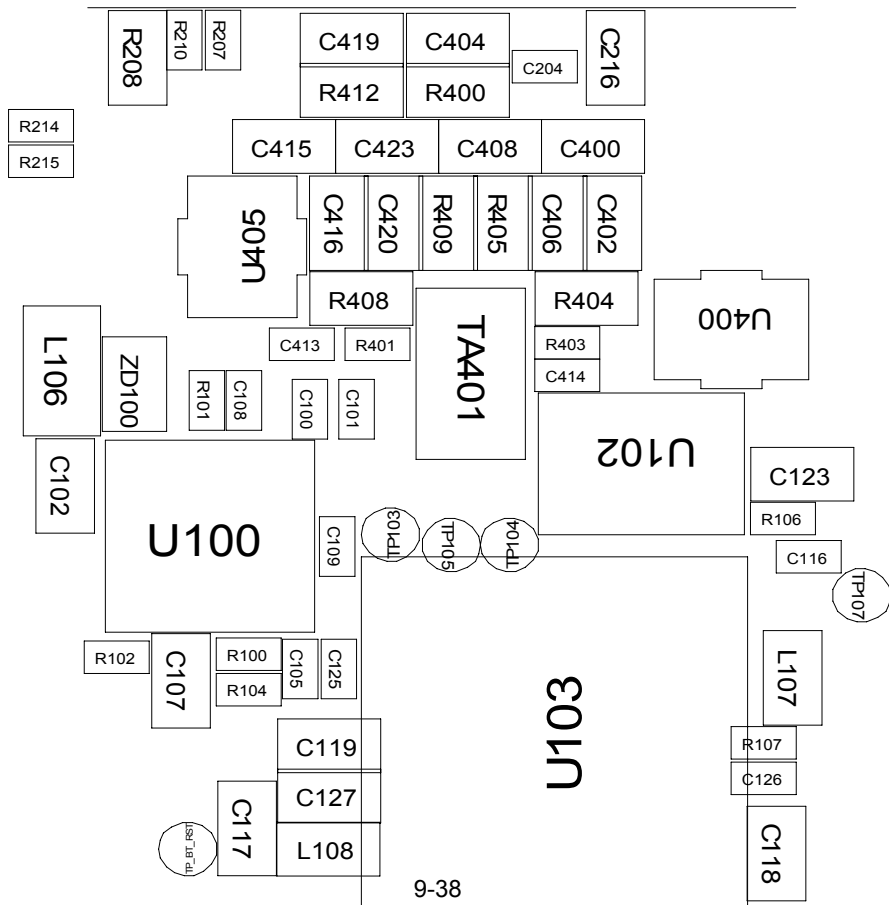
BLUE TOOTH

9-19. FM Radio part



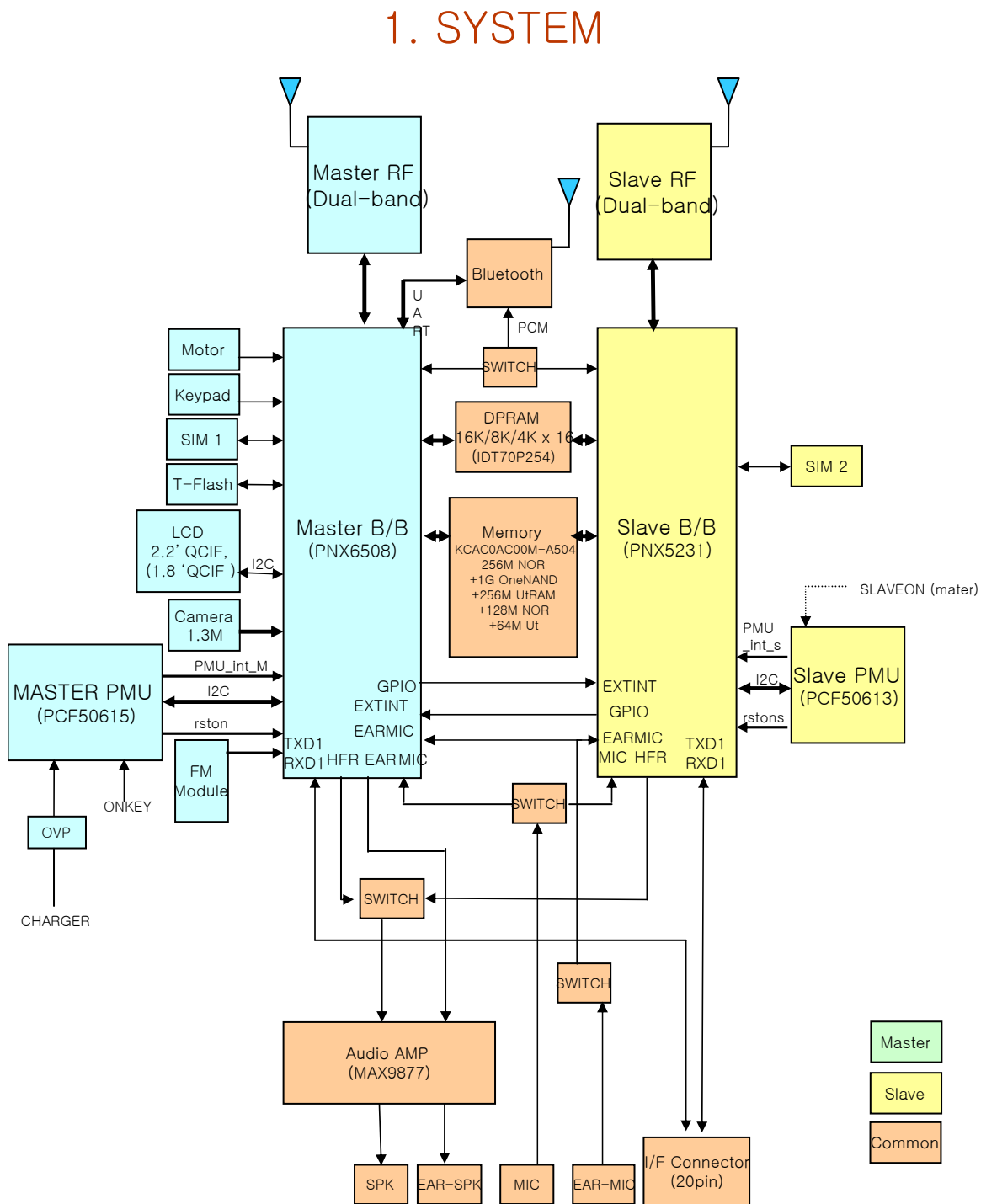


FM RADIO



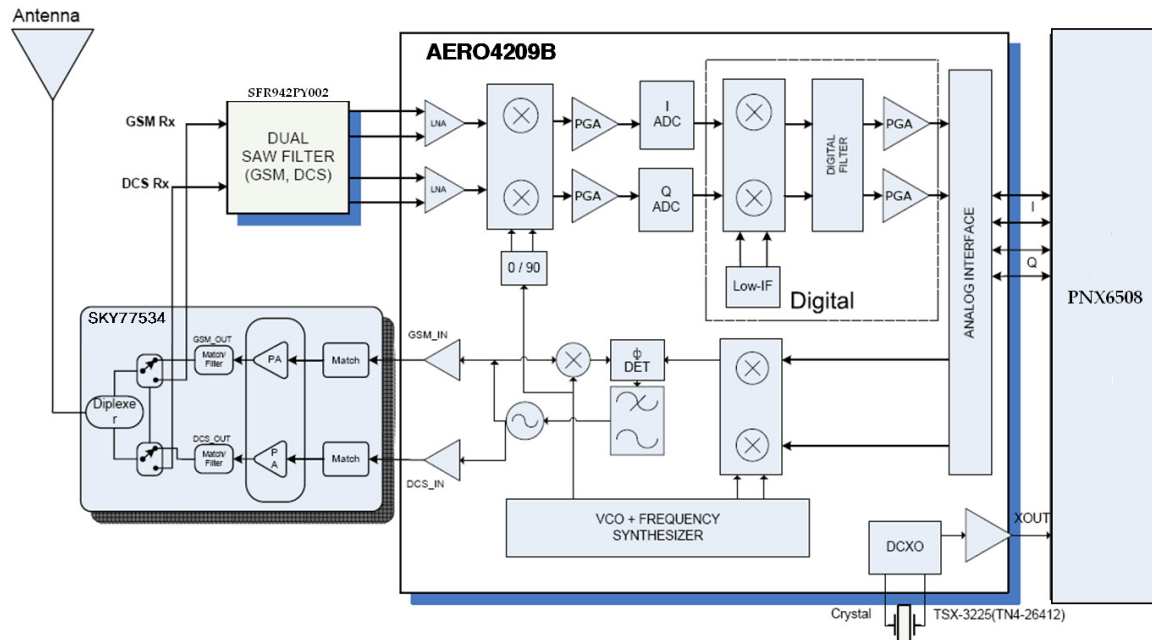
7. Block Diagrams

7-1. Functional Block Diagram

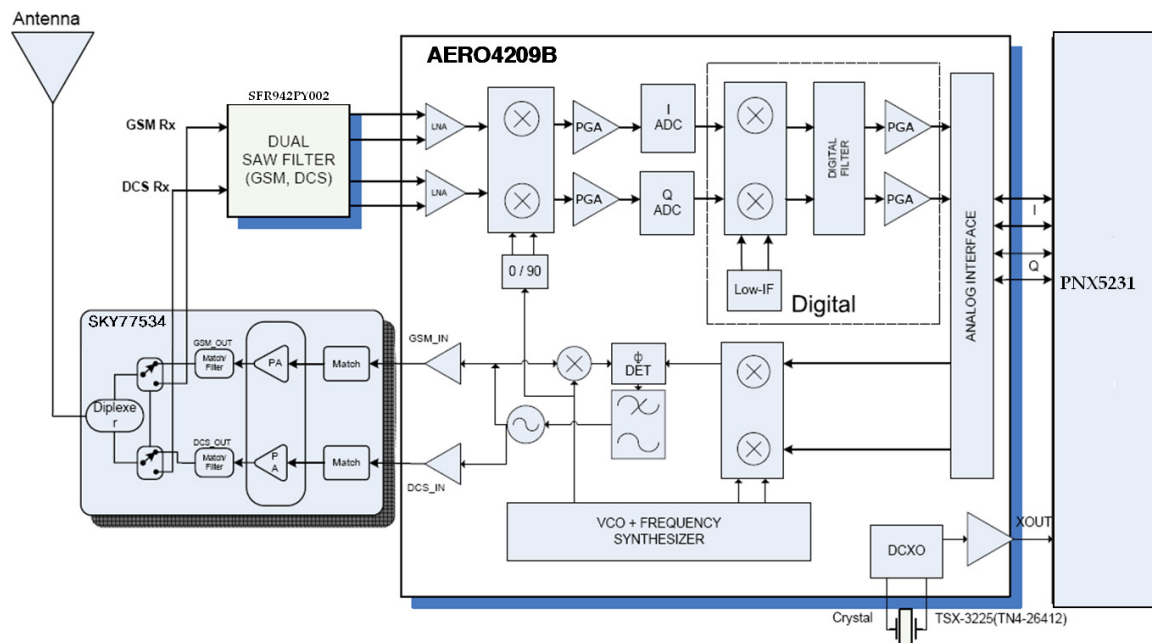


7-2. RF Solution Block Diagram

7-2-1. MASTER



7-2-2. SLAVE



8. PCB Diagrams

– Main top view

